

Islet1 Rabbit pAb

货号: **AYP16758**

产品信息

| | |
|-------|--|
| 反应 | Human,Mouse,Rat |
| 宿主 | Rabbit |
| 克隆性 | Polyclonal |
| 预测反应 | |
| 应用 | WB |
| 推荐浓度 | WB: 1:500 - 1:2000 |
| 理论分子量 | 39kDa |
| 实测分子量 | 50kDa |
| 形式 | Liquid |
| 保存条件 | Store at -20°C. Avoid freeze / thaw cycles. Buffer: PBS with 0.02% sodium azide,50% glycerol,pH7.3. |
| 偶联物 | Unconjugated |
| 阳性对照 | HeLa,SH-SY5Y,Mouse thymus,Rat thymus |
| 细胞定位 | Nucleus |
| 纯化 | Affinity purification |

抗原信息

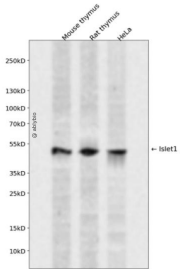
| | |
|------|---|
| 抗原信息 | A synthetic peptide corresponding to a sequence within amino acids 200-300 of human Islet1 (NP_002193.2). |
| 序列 | YAANPRPDALMKEQLVEMTGLSPRVIRVWFQNKRCDDKRSIMMKQLQQQPNDKTNIQGMTGTPMVAASPERHDGG LQANPVEVQSYQPPWKVLSDFALQ |

靶点信息

| | |
|------|---|
| 研究背景 | This gene encodes a member of the LIM/homeodomain family of transcription factors. The encoded protein binds to the enhancer region of the insulin gene, among others, and may play an important role in regulating insulin gene expression. The encoded protein is central to the development of pancreatic cell lineages and may also be required for motor neuron generation. Mutations in this gene have been associated with maturity-onset diabetes of the young. |
| 基因ID | 3670 |

| | |
|-------|-------------------|
| 基因名 | ISL1 |
| Swiss | P61371 |
| 别名 | ISL1;ISLET1;Isl-1 |

产品验证



Western blot analysis of Islet1 expressed in Mouse thymus,Rat thymus,HeLa using Islet1 Rabbit pAb at 1:1000. Secondary antibody: HRP Goat Anti-Rabbit IgG (H+L) at 1:5000. Lysates/proteins: 30ug per lane. Blocking buffer: 5% non-fat dry milk in TBST. Detection: ECL Enhanced Kit. Exposure time: 120s.

实验步骤

访问官网浏览详情: www.ablybio.cn