

KLK10 Rabbit pAb

货号: **AYP16750**

产品信息

反应	Human,Mouse,Rat
宿主	Rabbit
克隆性	Polyclonal
预测反应	
应用	WB
推荐浓度	WB: 1:500 - 1:2000
理论分子量	30kDa
实测分子量	30kDa
形式	Liquid
保存条件	Store at -20°C. Avoid freeze / thaw cycles. Buffer: PBS with 0.02% sodium azide,50% glycerol,pH7.3.
偶联物	Unconjugated
阳性对照	Mouse liver,Mouse brain,Mouse heart,Rat liver
细胞定位	Secreted
纯化	Affinity purification

抗原信息

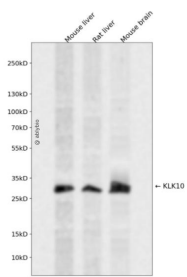
抗原信息	Recombinant fusion protein containing a sequence corresponding to amino acids 35-276 of human KLK10 (NP_001070968.1).
序列	LLPQNDTRLDPAYGSPCARGSQPWQVSLFNGLSFHCAGVLVDQSWVLTAHCGNKPLWARVGDHLLLLQGEQLRRT TRSVVHPKYHQSGPILPRRTDEHDLMLLKLARPVVLGPRVRALQLPYRCAQPGDQCQVAGWGTTAARRVKYNKGLTCS SITILSPKECEVFYPGVVTNNMICAGLDRGQDPCQSDSGGPLVCDLQGILSWGVIYPCGSAQHPAVYTQICKYMSWINK VIRSN

靶点信息

研究背景	Kallikreins are a subgroup of serine proteases having diverse physiological functions. Growing evidence suggests that many kallikreins are implicated in carcinogenesis and some have potential as novel cancer and other disease biomarkers. This gene is one of the fifteen kallikrein subfamily members located in a cluster on chromosome 19. Its encoded protein is secreted and may play a role in suppression of tumorigenesis in breast and prostate cancers. Alternate splicing of this gene results in multiple transcript variants encoding the same protein.
------	--

基因ID	5655
基因名	KLK10
Swiss	O43240
别名	KLK10;NES1;PRSSL1

产品验证



Western blot analysis of KLK10 expressed in Mouse liver,Rat liver,Mouse brain using KLK10 Rabbit pAb at 1:1000. Secondary antibody: HRP Goat Anti-Rabbit IgG (H+L) at 1:5000. Lysates/proteins: 30ug per lane. Blocking buffer: 5% non-fat dry milk in TBST. Detection: ECL Enhanced Kit. Exposure time: 120s.

实验步骤

访问官网浏览详情: www.ablybio.cn