

PSG1 Rabbit pAb

货号: **AYP16747**

产品信息

反应	Human
宿主	Rabbit
克隆性	Polyclonal
预测反应	
应用	WB IHC IF/ICC
推荐浓度	WB: 1:500 - 1:2000 IHC: 1:50 - 1:100 IF/ICC: 1:50 - 1:200
理论分子量	46kDa/47kDa/48kDa
实测分子量	55-72kDa
形式	Liquid
保存条件	Store at -20°C. Avoid freeze / thaw cycles. Buffer: PBS with 0.02% sodium azide,50% glycerol,pH7.3.
偶联物	Unconjugated
阳性对照	A-549,U-251MG,HeLa
细胞定位	Secreted
纯化	Affinity purification

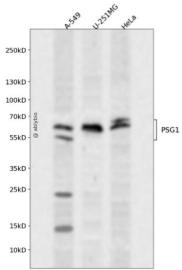
抗原信息

抗原信息	Recombinant fusion protein containing a sequence corresponding to amino acids 180-419 of human PSG1 (NP_001171754.1).
序列	WWMNGQSLPMTHSLKLSETNRTLFLGVTKYTAGPYECEIRNPVSASRSDPVTLNLLPKLPKPYITINNLNPRENKDVLNFT CEPKSENYTIWWLNGQSLPVSPRVKRPINRILILPSVTRNETGPYQCEIRDYGGIRSDPVTNLVLYGPDLPRIYPSFTYYR SGEVLYLSCSADSNPQAQYSWTINEKFQLPGQKLFIRHITTKHSGLYVCSVRNSATGKESSKSMTVEVSDWTVP

靶点信息

研究背景	The human placenta is a multihormonal endocrine organ that produces hormones, enzymes, and other molecules that support fetal survival and development. Pregnancy-specific beta-1-glycoprotein (PSBG, PSG) is a major product of the syncytiotrophoblast, reaching concentrations of 100 to 290 mg/l at term in the serum of pregnant women (Horne et al., 1976 [PubMed 971765]). PSG is a member of the immunoglobulin (Ig) superfamily (Watanabe and Chou, 1988 [PubMed 3257488]; Streydio et al., 1988 [PubMed 3260773]). [supplied by OMIM, Oct 2009]
基因ID	5669
基因名	PSG1
Swiss	P11464
别名	PSG1;B1G1;CD66f;DHFRP2;FL-NCA-1/2;PBG1;PS-beta-C/D;PS-beta-G-1;PSBG-1;PSBG1;PSG95;PSGGA;PSGII A;SP1

产品验证



Western blot analysis of PSG1 expressed in A-549,U-251MG,HeLa using PSG1 Rabbit pAb at 1:1000. Secondary antibody: HRP Goat Anti-Rabbit IgG (H+L) at 1:5000. Lysates/proteins: 30ug per lane. Blocking buffer: 5% non-fat dry milk in TBST. Detection: ECL Enhanced Kit. Exposure time: 120s.

实验步骤

访问官网浏览详情: www.ablybio.cn