

Phospho-Bcl-2-S87 Rabbit pAb

货号: **AYP16746**

产品信息

反应	Human,Rat
宿主	Rabbit
克隆性	Polyclonal
预测反应	
应用	WB
推荐浓度	WB: 1:500 - 1:2000
理论分子量	22kDa/26kDa
实测分子量	28kDa
形式	Liquid
保存条件	Store at -20°C. Avoid freeze / thaw cycles. Buffer: PBS with 0.01% thiomersal,50% glycerol,pH7.3.
偶联物	Unconjugated
阳性对照	C6
细胞定位	Endoplasmic reticulum membrane,Mitochondrion outer membrane,Nucleus membrane,Single-pass membrane protein
纯化	Affinity purification

抗原信息

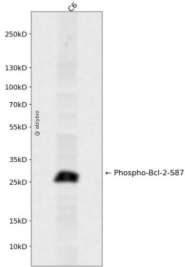
抗原信息	A synthetic phosphorylated peptide around S87 of human Bcl-2 (NP_000624.2).
序列	ALSPV

靶点信息

研究背景	This gene encodes an integral outer mitochondrial membrane protein that blocks the apoptotic death of some cells such as lymphocytes. Constitutive expression of BCL2, such as in the case of translocation of BCL2 to Ig heavy chain locus, is thought to be the cause of follicular lymphoma. Alternative splicing results in multiple transcript variants. [provided by RefSeq, Feb 2016]
基因ID	596

基因名	BCL2
Swiss	P10415
别名	Bcl-2;PPP1R50;BCL2

产品验证



Western blot analysis of Phospho-Bcl-2-S87 expressed in C6 using Phospho-Bcl-2-S87 Rabbit pAb at 1:1000. Secondary antibody: HRP Goat Anti-Rabbit IgG (H+L) at 1:5000. Lysates/proteins: 30ug per lane. Blocking buffer: 5% non-fat dry milk in TBST. Detection: ECL Enhanced Kit. Exposure time: 120s.

实验步骤

访问官网浏览详情: www.ablybio.cn