

RPL9 Rabbit pAb

货号: **AYP16742**

产品信息

反应	Human,Mouse
宿主	Rabbit
克隆性	Polyclonal
预测反应	
应用	WB IF/ICC
推荐浓度	WB: 1:500 - 1:2000 IF/ICC: 1:10 - 1:100
理论分子量	21kDa
实测分子量	22kDa
形式	Liquid
保存条件	Store at -20°C. Avoid freeze / thaw cycles. Buffer: PBS with 0.02% sodium azide,50% glycerol,pH7.3.
偶联物	Unconjugated
阳性对照	U-251MG,HeLa,HepG2,Mouse brain,Mouse pancreas
细胞定位	cytoplasm,cytosol,cytosolic ribosome,focal adhesion,nucleus
纯化	Affinity purification

抗原信息

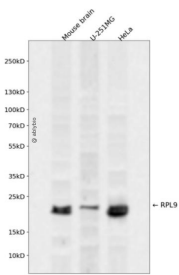
抗原信息	Recombinant fusion protein containing a sequence corresponding to amino acids 1-192 of human RPL9 (N P_000652.2).
序列	MKTILSNQTVDIPENVDTILKGRTVIVKGRGTLRRDFNHINVELSLLGKKKRLRVDKWVGNRKELATVRTICSHVQNMIK GVTLGFYKMRSVYAHFPINVVIQENGLSVEIRNFLGEKYIRRVRMRPGVACSVSQAQKDELILEGNDIELVSNSAALIQQAT TVKNKDIRKFLDGIYVSEKGTVQQADE

靶点信息

研究背景	Ribosomes, the organelles that catalyze protein synthesis, consist of a small 40S subunit and a large 60S subunit. Together these subunits are composed of 4 RNA species and approximately 80 structurally distinct proteins. This gene encodes a ribosomal protein that is a component of the 60S subunit. The protein belongs to the L6P family of ribosomal proteins. It is located in the cytoplasm. As is typical for genes encoding ribosomal proteins, there are multiple processed pseudogenes of this gene dispersed through the genome. Alternative splicing results in multiple transcript variants.
------	---

基因ID	6133
基因名	RPL9; RPL9P7; RPL9P8; RPL9P9
Swiss	P32969
别名	RPL9;L9;NPC-A-16

产品验证



Western blot analysis of RPL9 expressed in Mouse brain,U-251MG,HeLa using RPL9 Rabbit pAb at 1:1000. Secondary antibody: HRP Goat Anti-Rabbit IgG (H+L) at 1:5000. Lysates/proteins: 30ug per lane. Blocking buffer: 5% non-fat dry milk in TBST. Detection: ECL Enhanced Kit. Exposure time: 120s.

实验步骤

访问官网浏览详情: www.ablybio.cn