

SCG2 Rabbit pAb

货号: **AYP16734**

产品信息

| | |
|-------|--|
| 反应 | Human,Rat |
| 宿主 | Rabbit |
| 克隆性 | Polyclonal |
| 预测反应 | |
| 应用 | WB IF/ICC |
| 推荐浓度 | WB: 1:500 - 1:2000 IF/ICC: 1:50 - 1:200 |
| 理论分子量 | 70kDa |
| 实测分子量 | 65kDa |
| 形式 | Liquid |
| 保存条件 | Store at -20°C. Avoid freeze / thaw cycles. Buffer: PBS with 0.02% sodium azide,50% glycerol,pH7.3. |
| 偶联物 | Unconjugated |
| 阳性对照 | SW620,Jurkat |
| 细胞定位 | Secreted |
| 纯化 | Affinity purification |

抗原信息

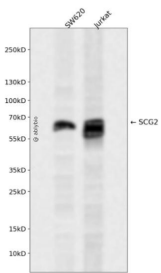
| | |
|------|--|
| 抗原信息 | Recombinant fusion protein containing a sequence corresponding to amino acids 30-320 of human SCG2 (NP_003460.2). |
| 序列 | FQRNQLLQKEPDLRLENVQKFPSPMIRALEYIENLRQQAHKKESSPDYNPYQGVSVPLQKENGDESHLPERDSLSEED WMRIILEALRQAENEPQSAPKENKPYALNSEKNFPMDSDDYETQQWPERKCLKHMQFPPMYEENSRDNPFKRTNEIVEE QYTPQSLATLESVVFQELGKLTGPNNQKRERMDEEQKLYTDDDDIYKANNIAYEDVVGGEDWNPVEEKIESQTQEVEVRDS KENIEKNEQINDEMKRSGQLGIQEEDLRKESKDQLSDDVSKVIAYLKRLVNA |

靶点信息

| | |
|------|--|
| 研究背景 | The protein encoded by this gene is a member of the chromogranin/secretogranin family of neuroendocrine secretory proteins. Studies in rodents suggest that the full-length protein, secretogranin II, is involved in the packaging or sorting of peptide hormones and neuropeptides into secretory vesicles. The full-length protein is cleaved to produce the active peptide secretoneurin, which exerts chemotaxic effects on specific cell types, and EM66, whose function is unknown. |
|------|--|

| | |
|-------|------------------------|
| 基因ID | 7857 |
| 基因名 | SCG2 |
| Swiss | P13521 |
| 别名 | SCG2;CHGC;EM66;SN;SgII |

产品验证



Western blot analysis of SCG2 expressed in SW620, Jurkat using SCG2 Rabbit pAb at 1:1000. Secondary antibody: HRP Goat Anti-Rabbit IgG (H+L) at 1:5000. Lysates/proteins: 30ug per lane. Blocking buffer: 5% non-fat dry milk in TBST. Detection: ECL Enhanced Kit. Exposure time: 120s.

实验步骤

访问官网浏览详情: www.ablybio.cn