

BLZF1 Rabbit pAb

货号: **AYP16730**

产品信息

反应	Human,Mouse
宿主	Rabbit
克隆性	Polyclonal
预测反应	
应用	WB IF/ICC
推荐浓度	WB: 1:500 - 1:2000 IF/ICC: 1:50 - 1:200
理论分子量	19kDa/44kDa
实测分子量	45kDa
形式	Liquid
保存条件	Store at -20°C. Avoid freeze / thaw cycles. Buffer: PBS with 0.02% sodium azide,50% glycerol,pH7.3.
偶联物	Unconjugated
阳性对照	MCF7,NIH/3T3,U-251MG,Jurkat,Mouse skeletal muscle
细胞定位	Cytoplasm,Golgi apparatus lumen,Nucleus
纯化	Affinity purification

抗原信息

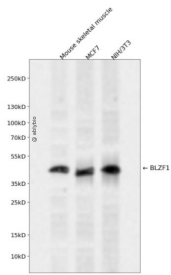
抗原信息	Recombinant fusion protein containing a sequence corresponding to amino acids 1-400 of human BLZF1 (NP_003657.1).
序列	MTTKNLETKVTVTSSPIRGAGDGMETEPPKSVEVTSGVQSRKHHSLSQPWKKAVPSES PGVLQLGKMLTEKAMEVKAV RILVPKAAITHDIPNKNTKVKSLGHKGEFLGQSEGVIEPNKELSEVKNVLEKLNSERRLLQDKEGLSNQLRVQTEVNREL KKLLVASVGDDLQYHFERLAREKNQLILENEALGRNTAQLSEQLERMSIQCDVWRSKFLASRVMADEL TNSRAALQRQNR DAHGAIQDLLSEREQFRQEMIATQKLEELLVSLQWGREQTYSVSPVQPHSTAEALTNHKLAKAVNSHLLGNVGINNQKKI PSTVEFCSTPAEKMAETVLRILD PVTCKESSPDNPFESSPTLLATKKNIGRFHPYTRYENITFNCCNHCRGELIAL

靶点信息

研究背景	Required for normal Golgi structure and for protein transport from the endoplasmic reticulum (ER through the Golgi apparatus to the cell surface.
------	---

基因ID	8548
基因名	BLZF1
Swiss	Q9H2G9
别名	BLZF1;GOLGIN-45;JEM-1;JEM-1s;JEM1;golgin-45

产品验证



Western blot analysis of BLZF1 expressed in Mouse skeletal muscle, MCF7, NIH/3T3 using BLZF1 Rabbit pAb at 1:1000. Secondary antibody: HRP Goat Anti-Rabbit IgG (H+L) at 1:5000. Lysates/proteins: 30ug per lane. Blocking buffer: 5% non-fat dry milk in TBST. Detection: ECL Enhanced Kit. Exposure time: 120s.

实验步骤

访问官网浏览详情: www.ablybio.cn