

C21orf33 Rabbit pAb

货号: **AYP16729**

产品信息

反应	Human,Mouse,Rat
宿主	Rabbit
克隆性	Polyclonal
预测反应	
应用	WB IF/ICC
推荐浓度	WB: 1:500 - 1:1000 IF/ICC: 1:10 - 1:100
理论分子量	24kDa/28kDa
实测分子量	25KDa
形式	Liquid
保存条件	Store at -20°C. Avoid freeze / thaw cycles. Buffer: PBS with 0.02% sodium azide,50% glycerol,pH7.3.
偶联物	Unconjugated
阳性对照	293T
细胞定位	Mitochondrion
纯化	Affinity purification

抗原信息

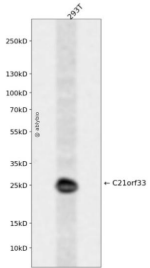
抗原信息	Recombinant fusion protein containing a sequence corresponding to amino acids 42-268 of human C21orf33 (NP_004640.4).
序列	AARVALVLSGCGVYDGTETIHEASAILVHLSRGGAEVQIFAPDVPQMHVIDHTKGQPSEGSRNVLTESARIARGKITDLANL SAANHDAAIFFGGFGAAKNLSTFAVDGKDCKVNKEVERVLKEFHQAGKPIGLCCIAPVLAAKVLRGVEVTVGHEQEEGGK WPYAGTAEAIKALGAKHCVKEVVEAHVDQKNKVTTTAFMCETALHYIHDGIGAMVRKVLELTGK

靶点信息

研究背景	This gene encodes a potential mitochondrial protein that is a member of the DJ-1/Pfpl gene family. This protein is overexpressed in fetal Down syndrome brain. Alternate splicing results in multiple transcript variants.
基因ID	8209

基因名	
Swiss	P30042
别名	C21orf33;ES1;GATD3;GT335;HES1;KNPH;KNPI

产品验证



Western blot analysis of C21orf33 expressed in 293T using C21orf33 Rabbit pAb at 1:1000. Secondary antibody: HRP Goat Anti-Rabbit IgG (H+L) at 1:5000. Lysates/proteins: 30ug per lane. Blocking buffer: 5% non-fat dry milk in TBST. Detection: ECL Enhanced Kit. Exposure time: 120s.

实验步骤

访问官网浏览详情: www.ablybio.cn