

SEPHS1 Rabbit pAb

货号: AYP16722

产品信息

反应	Human,Rat
宿主	Rabbit
克隆性	Polyclonal
预测反应	
应用	WB IHC IF/ICC
推荐浓度	WB: 1:500 - 1:2000 IHC: 1:50 - 1:200 IF/ICC: 1:10 - 1:100
理论分子量	35kDa/42kDa
实测分子量	43kDa
形式	Liquid
保存条件	Store at -20°C. Avoid freeze / thaw cycles. Buffer: PBS with 0.02% sodium azide,50% glycerol,pH7.3.
偶联物	Unconjugated
阳性对照	BT-474,SW620,HepG2,Rat kidney
细胞定位	Cell membrane,Cytoplasm,Nucleus membrane
纯化	Affinity purification

抗原信息

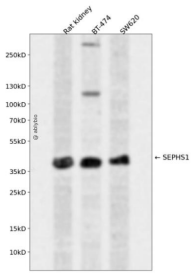
抗原信息	Recombinant fusion protein containing a sequence corresponding to amino acids 1-392 of human SEPHS1 (NP_036379.2).
序列	MSTRESFNPESEYELDKSFRLTRFTELKGTGCKVPQDVLQKLLSLESLQENHFQEDEQFLGAVMPRLGIGMDTCVIPLRHGGLS LVQTTDYIYIPVDDPYMMGRIACANVLSLDLYAMGVTECDNMLMLLGVSNKMTDRERDKVMPLIQGFKDAEEAGTSVTG GQTVLNPWIVLGGVATTVCQPNEFIMPDNAVPGDVLVLTKPLGTQVAVAVHQWLDIPEKWNKIKLVVTQEDVELAYQEAM MNMARLNRTAAGLMHTFNAAHAATDITGFGILGHAQNLAQQRNEVSFVIHNLPLVLAQMAAVSKACGNMFGLMHGTCPET SGGLLICLPREQAARFCAEIKSPKYGEGHQAWIIGIVEKGNRTARIIDKPRIIEVAPQVATQNVNPTPGATS

靶点信息

研究背景	This gene encodes an enzyme that synthesizes selenophosphate from selenide and ATP. Selenophosphate is the selenium donor used to synthesize selenocysteine, which is co-translationally incorporated into selenoproteins at in-frame UGA codons.
------	---

基因ID	22929
基因名	SEPHS1
Swiss	P49903
别名	SEPHS1;SELD;SPS;SPS1;selenide

产品验证



Western blot analysis of SEPHS1 expressed in Rat kidney,BT-474,SW620 using SEPHS1 Rabbit pAb at 1:1000. Secondary antibody: HRP Goat Anti-Rabbit IgG (H+L) at 1:5000. Lysates/proteins: 30ug per lane. Blocking buffer: 5% non-fat dry milk in TBST. Detection: ECL Enhanced Kit. Exposure time: 120s.

实验步骤

访问官网浏览详情: www.ablybio.cn