

# RHOD Rabbit pAb

货号: **AYP16719**

## 产品信息

反应	Human,Mouse,Rat
宿主	Rabbit
克隆性	Polyclonal
预测反应	
应用	WB IHC IF/ICC
推荐浓度	<b>WB:</b> 1:500 - 1:2000 <b>IHC:</b> 1:50 - 1:200 <b>IF/ICC:</b> 1:50 - 1:200
理论分子量	23kDa
实测分子量	23kDa
形式	Liquid
保存条件	Store at -20°C. Avoid freeze / thaw cycles. Buffer: PBS with 0.01% thiomersal,50% glycerol,pH7.3.
偶联物	Unconjugated
阳性对照	BxPC-3,Mouse kidney,Mouse lung,Rat lung
细胞定位	Cell membrane,Cytoplasmic side,Early endosome,Lipid-anchor
纯化	Affinity purification

## 抗原信息

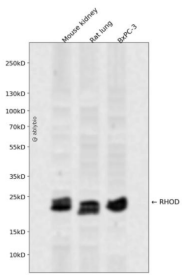
抗原信息	A synthetic peptide corresponding to a sequence within amino acids 100-200 of human RHOD (NP_055393.1).
序列	SPNSFDNIFNRWYPEVNHFCCKVPIIVVGCKTDLRKDKSLVNKLRRNGLEPVTYHRGQEMARSVGAVAYLECSARLHDNV HAVFQEAAEVALSSRGRNFWR

## 靶点信息

研究背景	Ras homolog, or Rho, proteins interact with protein kinases and may serve as targets for activated GTPases. They play a critical role in muscle differentiation. The protein encoded by this gene binds GTP and is a member of the small GTPase superfamily. It is involved in endosome dynamics and reorganization of the actin cytoskeleton, and it may coordinate membrane transport with the function of the cytoskeleton. Two transcript variants encoding different isoforms have been found for this gene.
------	---

基因ID	29984
基因名	RHOD
Swiss	O00212
别名	RHOD;ARHD;RHOHP1;RHOM;Rho

## 产品验证



Western blot analysis of RHOD expressed in Mouse kidney,Rat lung,BxPC-3 using RHOD Rabbit pAb at 1:1000. Secondary antibody: HRP Goat Anti-Rabbit IgG (H+L) at 1:5000. Lysates/proteins: 30ug per lane. Blocking buffer: 5% non-fat dry milk in TBST. Detection: ECL Enhanced Kit. Exposure time: 120s.

## 实验步骤

访问官网浏览详情: [www.ablybio.cn](http://www.ablybio.cn)