

# AIPL1 Rabbit pAb

货号: **AYP16718**

## 产品信息

反应	Human,Mouse
宿主	Rabbit
克隆性	Polyclonal
预测反应	
应用	WB IHC IF/ICC
推荐浓度	<b>WB:</b> 1:500 - 1:2000 <b>IHC:</b> 1:50 - 1:100 <b>IF/ICC:</b> 1:50 - 1:100
理论分子量	36kDa/40kDa/41kDa/43kDa
实测分子量	40-45kDa
形式	Liquid
保存条件	Store at -20°C. Avoid freeze / thaw cycles. Buffer: PBS with 0.02% sodium azide,50% glycerol,pH7.3.
偶联物	Unconjugated
阳性对照	Mouse liver,Mouse heart
细胞定位	Cytoplasm,Nucleus
纯化	Affinity purification

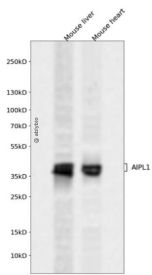
## 抗原信息

抗原信息	Recombinant fusion protein containing a sequence corresponding to amino acids 1-384 of human AIPL1 ( NP_055151.3).
序列	MDAALLLNVEGVKKTILHGGTGELPNFITGSRVIFHFRTMKCDEERTVIDDSRQVGQPMHIIIIGNMFKLEVWEILLTSMRVH EVAEFWCDTIHTGVYPILSRSLRQMAQKDPTEWHVHTCGLANMFAYHTLGYEDLDELQKEPQPLVFIPELLQVDAPSDY QRETWNLSNHEKMKAVPVLHGEGNRLFKLGRYEEASSKYQEAIICLRNLQTKPKWEVQWLKLEKMINTLILNYCQLLKKKE EYYEVLEHTSDILRHHPGIVKAYVVRARAHAEVWNEAEAKADLQKVLELEPSMQKAVRRELRLLENRMAEKQEEERLRCRN MLSQGATQPPAEPPTPEPPAQSSTEPPAEPPTAPSAELSAGPPAEPATEPPPPSPGHSLQH

## 靶点信息

研究背景	Leber congenital amaurosis (LCA) is the most severe inherited retinopathy with the earliest age of onset and accounts for at least 5% of all inherited retinal diseases. Affected individuals are diagnosed at birth or in the first few months of life with nystagmus, severely impaired vision or blindness and an abnormal or flat electroretinogram. The photoreceptor/pineal-expressed gene, AIPL1, encoding aryl-hydrocarbon interacting protein-like 1, is located within the LCA4 candidate region. The encoded protein contains three tetratricopeptide motifs, consistent with chaperone or nuclear transport activity. Mutations in this gene may cause approximately 20% of recessive LCA. Alternative splicing results in multiple transcript variants.
基因ID	23746
基因名	AIPL1
Swiss	Q9NZN9
别名	AIPL1;AIPL2;LCA4

## 产品验证



Western blot analysis of AIPL1 expressed in Mouse liver, Mouse heart using AIPL1 Rabbit pAb at 1:1000. Secondary antibody: HRP Goat Anti-Rabbit IgG (H+L) at 1:5000. Lysates/proteins: 30ug per lane. Blocking buffer: 5% non-fat dry milk in TBST. Detection: ECL Enhanced Kit. Exposure time: 120s.

## 实验步骤

访问官网浏览详情: [www.ablybio.cn](http://www.ablybio.cn)