

DUSP13 Rabbit pAb

货号: AYP16716

产品信息

反应	Mouse,Rat
宿主	Rabbit
克隆性	Polyclonal
预测反应	
应用	WB IHC
推荐浓度	WB: 1:500 - 1:2000 IHC: 1:50 - 1:200
理论分子量	6kDa/7kDa/9kDa/17kDa/20kDa/22kDa/27kDa
实测分子量	36kDa
形式	Liquid
保存条件	Store at -20°C. Avoid freeze / thaw cycles. Buffer: PBS with 0.01% thiomersal,50% glycerol,pH7.3.
偶联物	Unconjugated
阳性对照	Mouse skeletal muscle,Rat skeletal muscle
细胞定位	Cytoplasm
纯化	Affinity purification

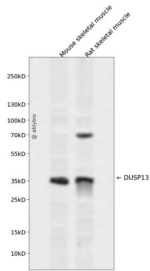
抗原信息

抗原信息	Recombinant fusion protein containing a sequence corresponding to amino acids 1-198 of human DUSP13 (NP_057448.3).
序列	MDSLQKQDLRRPKIHGAVQASPYQPPTLASLQRLWLWVRQAATLNHIDEVWPSLFLGDAYAARDKSKLIQLGITHVVNAAA GKFQVDTGAKFYRGMSLEYGIEADDNPFDFLSVYFLPVARYIRAALSVPQGRVLVHCAMGVSRSATLVLAFLMICENMTL VEAIQTVQAHRNICPNSGFLRQLQVLDNRLGRETGRF

靶点信息

研究背景	Members of the protein-tyrosine phosphatase superfamily cooperate with protein kinases to regulate cell proliferation and differentiation. This superfamily is separated into two families based on the substrate that is dephosphorylated. One family, the dual specificity phosphatases (DSPs) acts on both phosphotyrosine and phosphoserine/threonine residues. This gene encodes different but related DSP proteins through the use of non-overlapping open reading frames, alternate splicing, and presumed different transcription promoters. Expression of the distinct proteins from this gene has been found to be tissue specific and the proteins may be involved in postnatal development of specific tissues. A protein encoded by the upstream ORF was found in skeletal muscle, whereas the encoded protein from the downstream ORF was found only in testis. In mouse, a similar pattern of expression was found. Multiple alternatively spliced transcript variants were described, but the full-length sequence of only some were determined.
基因ID	51207
基因名	DUSP13
Swiss	Q6B8I1,Q9UII6
别名	DUSP13;BEDP;DUSP13A;DUSP13B;MDSP;SKRP4;TMDP

产品验证



Western blot analysis of DUSP13 expressed in Mouse skeletal muscle, Rat skeletal muscle using DUSP13 rabbit pAb at 1:1000. Secondary antibody: HRP Goat Anti-Rabbit IgG (H+L) at 1:5000. Lysates/proteins: 30 ug per lane. Blocking buffer: 5% non-fat dry milk in TBST. Detection: ECL Enhanced Kit. Exposure time: 120s.

实验步骤

访问官网浏览详情: www.ablybio.cn