

# ASF1B Rabbit pAb

货号: **AYP16704**

## 产品信息

反应	Human
宿主	Rabbit
克隆性	Polyclonal
预测反应	
应用	WB
推荐浓度	<b>WB:</b> 1:200 - 1:1000
理论分子量	22kDa
实测分子量	17kDa
形式	Liquid
保存条件	Store at -20°C. Avoid freeze / thaw cycles. Buffer: PBS with 0.02% sodium azide,50% glycerol,pH7.3.
偶联物	Unconjugated
阳性对照	HeLa,MCF7,THP-1
细胞定位	Nucleus
纯化	Affinity purification

## 抗原信息

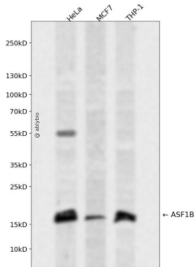
抗原信息	Recombinant fusion protein containing a sequence corresponding to amino acids 63-202 of human ASF1B (NP_060624.1).
序列	GPVPAGRHMVFVQADAPNP SLIPETDAVGVTVVLITCTYHGQEFIRVGYVNN EYLNPELRENPPMKPDFSQLQRNILASNP RVTRFHINWDNNMDRLEAIETQDPSLGCGLPLNCTPIKGLGLPGCIPGLLPENSMDCI

## 靶点信息

研究背景	This gene encodes a member of the H3/H4 family of histone chaperone proteins and is similar to the anti-silencing function-1 gene in yeast. The encoded protein is the substrate of the tousel-like kinase family of cell cycle-regulated kinases, and may play a key role in modulating the nucleosome structure of chromatin by ensuring a constant supply of histones at sites of nucleosome assembly.
基因ID	55723

基因名	ASF1B
Swiss	Q9NVP2
别名	ASF1B;CIA-II

## 产品验证



Western blot analysis of ASF1B expressed in HeLa, MCF7, THP-1 using ASF1B Rabbit pAb at 1:1000. Secondary antibody: HRP Goat Anti-Rabbit IgG (H+L) at 1:5000. Lysates/proteins: 30ug per lane. Blocking buffer: 5% non-fat dry milk in TBST. Detection: ECL Enhanced Kit. Exposure time: 120s.

## 实验步骤

访问官网浏览详情: [www.ablybio.cn](http://www.ablybio.cn)