

# ALAS2 Rabbit pAb

货号: **AYP16701**

## 产品信息

反应	Human,Mouse,Rat
宿主	Rabbit
克隆性	Polyclonal
预测反应	
应用	WB
推荐浓度	<b>WB:</b> 1:500 - 1:2000
理论分子量	49kDa/60kDa/63kDa/64kDa
实测分子量	60kDa
形式	Liquid
保存条件	Store at -20°C. Avoid freeze / thaw cycles. Buffer: PBS with 0.02% sodium azide,50% glycerol,pH7.3.
偶联物	Unconjugated
阳性对照	293T,Mouse liver,Mouse spleen,Mouse lung
细胞定位	Mitochondrion matrix
纯化	Affinity purification

## 抗原信息

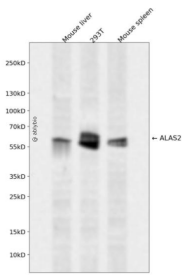
抗原信息	Recombinant fusion protein containing a sequence corresponding to amino acids 50-320 of human ALAS2 (NP_001033057.1).
序列	VKTHQFLFGIGRCPILATQGPNCSQIHLKATKAGGDSPSWAKGHCPFMSELQDGKSKIVQKAAPEVQEDVKAFKGTGNYV FSYDQFFRDKIMEKKQDHTYRVFKTVNRWADAYPFAQHSEASVASKDVSVWCSNDYLGMSRHPQVLQATQETLQRH GAGAGGTRNISGTSKFHVELEQELAELHQKDSALLFSSCFVANDSTLFTLAKILPGCEIYSDAGNHASMIQGIRNSGAAKFV FRHNDPDHLKLLKLEKSNPKIPKIVAFETVHSM

## 靶点信息

研究背景	The product of this gene specifies an erythroid-specific mitochondrially located enzyme. The encoded protein catalyzes the first step in the heme biosynthetic pathway. Defects in this gene cause X-linked pyridoxine-responsive sideroblastic anemia. Alternatively spliced transcript variants encoding different isoforms have been identified.
------	---

基因ID	212
基因名	ALAS2
Swiss	P22557
别名	ALAS2;ALAS-E;ALASE;ANH1;ASB;SIDBA1;XLDPP;XLEPP;XLSA

## 产品验证



Western blot analysis of ALAS2 expressed in Mouse liver,293T,Mouse spleen using ALAS2 Rabbit pAb at 1:1000. Secondary antibody: HRP Goat Anti-Rabbit IgG (H+L) at 1:5000. Lysates/proteins: 30ug per lane. Blocking buffer: 5% non-fat dry milk in TBST. Detection: ECL Enhanced Kit. Exposure time: 120s.

## 实验步骤

访问官网浏览详情: [www.ablybio.cn](http://www.ablybio.cn)