

AGPAT1 Rabbit pAb

货号: **AYP16697**

产品信息

反应	Human,Mouse,Rat
宿主	Rabbit
克隆性	Polyclonal
预测反应	
应用	WB IP
推荐浓度	WB: 1:500 - 1:2000 IP: 1:50 - 1:100
理论分子量	31kDa
实测分子量	32kDa
形式	Liquid
保存条件	Store at -20°C. Avoid freeze / thaw cycles. Buffer: PBS with 0.02% sodium azide,50% glycerol,pH7.3.
偶联物	Unconjugated
阳性对照	293T,SW620,Mouse kidney,Rat kidney
细胞定位	Endoplasmic reticulum membrane,Multi-pass membrane protein
纯化	Affinity purification

抗原信息

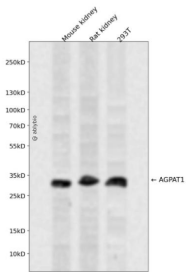
抗原信息	Recombinant fusion protein containing a sequence corresponding to amino acids 204-283 of human AGPAT1 (NP_006402.1).
序列	PIVIVMSSYQDFYCKKERRFTSGQCQVRVLPVPTEGLTPDDVPALADRVRHSMLTVFREISTDGRGGGDYLLKPGGGG

靶点信息

研究背景	This gene encodes an enzyme that converts lysophosphatidic acid (LPA) into phosphatidic acid (PA). LPA and PA are two phospholipids involved in signal transduction and in lipid biosynthesis in cells. This enzyme localizes to the endoplasmic reticulum. This gene is located in the class III region of the human major histocompatibility complex. Alternative splicing results in two transcript variants encoding the same protein.
基因ID	10554

基因名	AGPAT1
Swiss	Q99943
别名	AGPAT1;1-AGPAT1;G15;LPAAT-alpha;LPAATA

产品验证



Western blot analysis of AGPAT1 expressed in Mouse kidney,Rat kidney,293T using AGPAT1 Rabbit pAb at 1:1000. Secondary antibody: HRP Goat Anti-Rabbit IgG (H+L) at 1:5000. Lysates/proteins: 30ug per lane. Blocking buffer: 5% non-fat dry milk in TBST. Detection: ECL Enhanced Kit. Exposure time: 120s.

实验步骤

访问官网浏览详情: www.ablybio.cn