

CALU Rabbit pAb

货号: **AYP16694**

产品信息

反应	Human,Mouse,Rat
宿主	Rabbit
克隆性	Polyclonal
预测反应	
应用	WB IHC IF/ICC
推荐浓度	WB: 1:500 - 1:2000 IHC: 1:50 - 1:100 IF/ICC: 1:50 - 1:200
理论分子量	8kDa/16-38kDa
实测分子量	50kDa
形式	Liquid
保存条件	Store at -20°C. Avoid freeze / thaw cycles. Buffer: PBS with 0.02% sodium azide,50% glycerol,pH7.3.
偶联物	Unconjugated
阳性对照	NCI-H460,Mouse lung
细胞定位	Endoplasmic reticulum lumen,Melanosome,Sarcoplasmic reticulum lumen,Secreted
纯化	Affinity purification

抗原信息

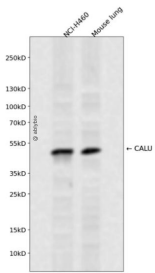
抗原信息	Recombinant fusion protein containing a sequence corresponding to amino acids 20-315 of human CALU (NP_001210.1).
序列	KPTEKKDRVHHEPQLSDKVHNDQAQSFYDHDHDAFLGAEAAKTFDQLTPEESKERLGKIVSKIDGDKDGFVTVDLKDWIKF AQKRWIYEDVERQWKGHDLNEDGLVSWEEYKNATYGYVLDDPDPDDGFNYKQMMVRDERRFKMADKDGDLIATKEEF TAFLHPEEYDYMKDIVVQETMEDIDKNADGFIDLEEYIGDMYSHDGNTDEPEWVKTEREQFVEFRDKNRDGMKDKEETK DWILPSDYDHAEAEARHLVYESDQNKDGKLTKEEIVDKYDLFVGSQATDFGEALVRHDEF

靶点信息

研究背景	The product of this gene is a calcium-binding protein localized in the endoplasmic reticulum (ER) and it is involved in such ER functions as protein folding and sorting. This protein belongs to a family of multiple E F-hand proteins (CERC) that include reticulocalbin, ERC-55, and Cab45 and the product of this gene. Alter natively spliced transcript variants encoding different isoforms have been identified.
------	---

基因ID	813
基因名	CALU
Swiss	O43852
别名	CALU;calumenin

产品验证



Western blot analysis of CALU expressed in NCI-H460, Mouse lung using CALU Rabbit pAb at 1:1000. Secondary antibody: HRP Goat Anti-Rabbit IgG (H+L) at 1:5000. Lysates/proteins: 30ug per lane. Blocking buffer: 5% non-fat dry milk in TBST. Detection: ECL Enhanced Kit. Exposure time: 120s.

实验步骤

访问官网浏览详情: www.ablybio.cn