

CCM2 Rabbit pAb

货号: **AYP16692**

产品信息

反应	Human,Mouse,Rat
宿主	Rabbit
克隆性	Polyclonal
预测反应	
应用	WB IHC
推荐浓度	WB: 1:500 - 1:2000 IHC: 1:50 - 1:200
理论分子量	39kDa/42kDa/48kDa/51kDa
实测分子量	55kDa
形式	Liquid
保存条件	Store at -20°C. Avoid freeze / thaw cycles. Buffer: PBS with 0.02% sodium azide,50% glycerol,pH7.3.
偶联物	Unconjugated
阳性对照	MCF7
细胞定位	Cytoplasm
纯化	Affinity purification

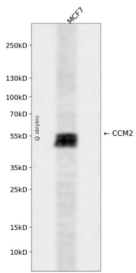
抗原信息

抗原信息	Recombinant fusion protein containing a sequence corresponding to amino acids 1-300 of human CCM2 (NP_113631.1).
序列	MEEEGKKGKPGIVSPFKRVFLKGEKSRDKKAHEKVTERPLHTVVLSLPERVEPDRLSDYIEKEVKYLGQLTSIPGYLNPS SRTEILHFIDNAKRAHQLPGHLTQEHDVLSLSAYNVKLAWRDGEDIILRVPIHDIAAVSYVRDDAAHLVVLKTAQDPGISPS QSLCAESSRGLSAGLSSES AVGPVEACCLVILAAESKVAEEELCCLLQVVFQVVYTESTIDFLDRAIFDGASTPTHLSLHS DDSSTKVDIKETYEVEASTFCFPESVDVGGASPHSKTISESELSASATELLQ

靶点信息

研究背景	This gene encodes a scaffold protein that functions in the stress-activated p38 Mitogen-activated protein kinase (MAPK) signaling cascade. The protein interacts with SMAD specific E3 ubiquitin protein ligase 1 (also known as SMURF1) via a phosphotyrosine binding domain to promote RhoA degradation. The protein is required for normal cytoskeletal structure, cell-cell interactions, and lumen formation in endothelial cells. Mutations in this gene result in cerebral cavernous malformations. Multiple transcript variants encoding different isoforms have been found for this gene.
基因ID	83605
基因名	CCM2
Swiss	Q9BSQ5
别名	CCM2;C7orf22;OSM;PP10187

产品验证



Western blot analysis of CCM2 expressed in MCF7 using CCM2 Rabbit pAb at 1:1000. Secondary antibody: HRP Goat Anti-Rabbit IgG (H+L) at 1:5000. Lysates/proteins: 30ug per lane. Blocking buffer: 5% non-fat dry milk in TBST. Detection: ECL Enhanced Kit. Exposure time: 120s.

实验步骤

访问官网浏览详情: www.ablybio.cn