

CCBL1 Rabbit pAb

货号: **AYP16691**

产品信息

反应	Human,Mouse,Rat
宿主	Rabbit
克隆性	Polyclonal
预测反应	
应用	WB IF/ICC
推荐浓度	WB: 1:500 - 1:2000 IF/ICC: 1:10 - 1:100
理论分子量	27kDa/42kDa/47kDa
实测分子量	48kDa
形式	Liquid
保存条件	Store at -20°C. Avoid freeze / thaw cycles. Buffer: PBS with 0.02% sodium azide,50% glycerol,pH7.3.
偶联物	Unconjugated
阳性对照	Raji,HeLa,SW620,Mouse liver,Mouse kidney,Mouse heart,Rat kidney
细胞定位	Cytoplasm
纯化	Affinity purification

抗原信息

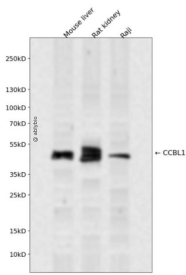
抗原信息	Recombinant fusion protein containing a sequence corresponding to amino acids 1-270 of human CCBL1 (NP_001116144.1).
序列	MAKQLQARRLDGIDYNPWVEFVKLASEHDVVNLGQGFPDFPPPDFAVEAFQHAVSGDFMLNQYTKTFVIIIPEFFDCYEP MTMMAGGRPVFVSLKPGPIQNGELGSSSNWQLDPMELAGKFTSRKALVLNTPNNPLGKVFSSREELELVASLCQQHDVV CITDEVYQWMVYDGHQHISIASLPGMWERTLTIGSAGKTFSATGWKVGWVLPDGHIMKHLRTVHQNSVDFHCPTQSQA VAESFEREQLLFRQPSSYFVQFPQAMQRCRDHM

靶点信息

研究背景	This gene encodes a cytosolic enzyme that is responsible for the metabolism of cysteine conjugates of certain halogenated alkenes and alkanes. This metabolism can form reactive metabolites leading to nephrotoxicity and neurotoxicity. Increased levels of this enzyme have been linked to schizophrenia. Multiple transcript variants that encode different isoforms have been identified for this gene.
------	--

基因ID	883
基因名	KYAT1
Swiss	Q16773
别名	KYAT1;CCBL1;GTK;KAT1;KATI

产品验证



Western blot analysis of CCBL1 expressed in Mouse liver,Rat kidney,Raji using CCBL1 Rabbit pAb at 1:1 000. Secondary antibody: HRP Goat Anti-Rabbit IgG (H+L) at 1:5000. Lysates/proteins: 30ug per lane. Blocking buffer: 5% non-fat dry milk in TBST. Detection: ECL Enhanced Kit. Exposure time: 120s.

实验步骤

访问官网浏览详情: www.ablybio.cn