

CD1B Rabbit pAb

货号: **AYP16688**

产品信息

反应	Human
宿主	Rabbit
克隆性	Polyclonal
预测反应	
应用	WB
推荐浓度	WB: 1:500 - 1:2000
理论分子量	30kDa/36kDa
实测分子量	47kDa
形式	Liquid
保存条件	Store at -20°C. Avoid freeze / thaw cycles. Buffer: PBS with 0.02% sodium azide,50% glycerol,pH7.3.
偶联物	Unconjugated
阳性对照	NCI-H125
细胞定位	Cell membrane,Endosome membrane,Lysosome membrane,Single-pass type I membrane protein
纯化	Affinity purification

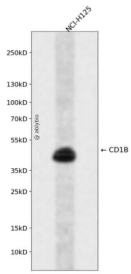
抗原信息

抗原信息	Recombinant fusion protein containing a sequence corresponding to amino acids 18-303 of human CD1B (NP_001755.1).
序列	SEHAFQGPTSFHVIQTSSFTNSTWAQTQGGWLDLQIHGWSDSDSGTAIFLKPWSKGNFSDKEVAELEEIFRVYIFGFAR EVQDFAGDFQMYPFEIQGIAGCELHSGGAIVSFLRGALGGLDFLSVKNASCVPSPEGGSSRAQKFCALIIQYQGIMETVRIL LYETCPRYLLGVLNAGKADLQRQVKPEAWLSSGSPGPGRLQLVCHVSGFYKPVWVMWMRGEQEQGTQLGDILPNA NWTWYLRATLDVADGEAAGLSCRVKHSSLEGQDIILYWRNPTSIGS

靶点信息

研究背景	This gene encodes a member of the CD1 family of transmembrane glycoproteins, which are structurally related to the major histocompatibility complex (MHC) proteins and form heterodimers with beta-2-microglobulin. The CD1 proteins mediate the presentation of primarily lipid and glycolipid antigens of self or microbial origin to T cells. The human genome contains five CD1 family genes organized in a cluster on chromosome 1. The CD1 family members are thought to differ in their cellular localization and specificity for particular lipid ligands. The protein encoded by this gene localizes to late endosomes and lysosomes via a tyrosine-based motif in the cytoplasmic tail, and requires vesicular acidification to bind lipid antigens.
基因ID	910
基因名	CD1B
Swiss	P29016
别名	CD1B;CD1;CD1A;R1

产品验证



Western blot analysis of CD1B expressed in NCI-H125 using CD1B Rabbit pAb at 1:1000. Secondary antibody: HRP Goat Anti-Rabbit IgG (H+L) at 1:5000. Lysates/proteins: 30ug per lane. Blocking buffer: 5% non-fat dry milk in TBST. Detection: ECL Enhanced Kit. Exposure time: 120s.

实验步骤

访问官网浏览详情: www.ablybio.cn