

# Langerin/CD207 Rabbit pAb

货号: **AYP16683**

## 产品信息

|       |  |
|-------|--|
| 反应    | Human,Mouse,Rat  |
| 宿主    | Rabbit   |
| 克隆性   | Polyclonal   |
| 预测反应  |  |
| 应用    | WB   |
| 推荐浓度  | <b>WB:</b> 1:500 - 1:1000  |
| 理论分子量 | 36kDa  |
| 实测分子量 | 40-50KDa   |
| 形式    | Liquid   |
| 保存条件  | Store at -20°C. Avoid freeze / thaw cycles.<br>Buffer: PBS with 0.02% sodium azide,50% glycerol,pH7.3. |
| 偶联物   | Unconjugated   |
| 阳性对照  | A-549,A-431,Jurkat,Mouse lung,Rat lung,Rat liver   |
| 细胞定位  | Membrane,Single-pass type II membrane protein  |
| 纯化    | Affinity purification  |

## 抗原信息

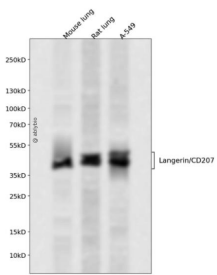
|      |   |
|------|---|
| 抗原信息 | Recombinant fusion protein containing a sequence corresponding to amino acids 69-328 of human Langerin/CD207 (NP_056532.4).   |
| 序列   | GTISDVKTNVQLLKGRVDNISTLDSEIKKNSDGMEAAGVQIQMVNESLGYVRSQFLKLTSEKANAQIQILTRSWEEVSTLNAQIPELKS DLEKASALNTKIRALQGSLENMSKLLKRQNDILQVVSQGWKYFKGNFYFSLIPKTWYSAEQFCVSRNSHLTSVTSESEQEFlyKTAGGLIYWIGLTKAGMEGDWSWVDDTPFNKVQSVRFWIPGEPNNAGNNEHCGNIKAPSLQAWNDAPCDKTF LFICKRPYPVPEP |

## 靶点信息

|      |   |
|------|---|
| 研究背景 | The protein encoded by this gene is expressed only in Langerhans cells which are immature dendritic cells of the epidermis and mucosa. It is localized in the Birbeck granules, organelles present in the cytoplasm of Langerhans cells and consisting of superimposed and zippered membranes. It is a C-type lectin with mannose binding specificity, and it has been proposed that mannose binding by this protein leads to internalization of antigen into Birbeck granules and providing access to a nonclassical antigen-processing pathway. Mutations in this gene result in Birbeck granules deficiency or loss of sugar binding activity. |
|------|---|

|       |              |
|-------|--------------|
| 基因ID  | 50489        |
| 基因名   | CD207        |
| Swiss | Q9UJ71       |
| 别名    | CD207;CLEC4K |

## 产品验证



Western blot analysis of Langerin/CD207 expressed in Mouse lung,Rat lung,A-549 using Langerin/CD 207 Rabbit pAb at 1:1000. Secondary antibody: HRP Goat Anti-Rabbit IgG (H+L) at 1:5000. Lysates/p roteins: 30ug per lane. Blocking buffer: 5% non-fat dry milk in TBST. Detection: ECL Enhanced Kit. Ex posure time: 120s.

## 实验步骤

访问官网浏览详情: [www.ablybio.cn](http://www.ablybio.cn)