

CPM Rabbit pAb

货号: **AYP16680**

产品信息

反应	Human,Rat
宿主	Rabbit
克隆性	Polyclonal
预测反应	
应用	WB IHC
推荐浓度	WB: 1:100 - 1:500 IHC: 1:50 - 1:100
理论分子量	50kDa
实测分子量	51kDa
形式	Liquid
保存条件	Store at -20°C. Avoid freeze / thaw cycles. Buffer: PBS with 0.02% sodium azide,50% glycerol,pH7.3.
偶联物	Unconjugated
阳性对照	Rat lung
细胞定位	Cell membrane,GPI-anchor,Lipid-anchor
纯化	Affinity purification

抗原信息

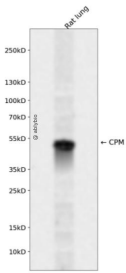
抗原信息	Recombinant fusion protein containing a sequence corresponding to amino acids 204-443 of human CPM (NP_001005502.1).
序列	VQATGALYSRSLTPDDDDVFQYLAHTYASRNPNMKKGDECKNKMNFNGVVTNGYSWYPLQGGMQDYNYIWAQCFEITL LSCCKYPREEKLPSFWNNKASLIEYIKQVHLGVKGQVFDQNGNPLPNVIVEVQDRKHICPYRTNKYGEYLLLLPGSYIINV TVPGHDPHITKVIPEKSQNFSAKKDILLPFQGLDSIPVSNPSCPMIPLYRNLDPHSAATKPSLFLFLVSLHHIFFK

靶点信息

研究背景	The protein encoded by this gene is a membrane-bound arginine/lysine carboxypeptidase. Its expression is associated with monocyte to macrophage differentiation. This encoded protein contains hydrophobic regions at the amino and carboxy termini and has 6 potential asparagine-linked glycosylation sites. The active site residues of carboxypeptidases A and B are conserved in this protein. Three alternatively spliced transcript variants encoding the same protein have been described for this gene.
------	--

基因ID	1368
基因名	CPM
Swiss	P14384
别名	CPM

产品验证



Western blot analysis of CPM expressed in Rat lung using CPM Rabbit pAb at 1:1000. Secondary antibody: HRP Goat Anti-Rabbit IgG (H+L) at 1:5000. Lysates/proteins: 30ug per lane. Blocking buffer: 5% non-fat dry milk in TBST. Detection: ECL Enhanced Kit. Exposure time: 120s.

实验步骤

访问官网浏览详情: www.ablybio.cn