

# CREB3 Rabbit pAb

货号: **AYP16676**

## 产品信息

反应	Human,Mouse,Rat
宿主	Rabbit
克隆性	Polyclonal
预测反应	
应用	WB IF/ICC
推荐浓度	<b>WB:</b> 1:500 - 1:2000 <b>IF/ICC:</b> 1:10 - 1:100
理论分子量	39kDa/41kDa/43kDa
实测分子量	41kDa
形式	Liquid
保存条件	Store at -20°C. Avoid freeze / thaw cycles. Buffer: PBS with 0.01% thiomersal,50% glycerol,pH7.3.
偶联物	Unconjugated
阳性对照	Jurkat,HeLa,293T,HepG2,Mouse brain,Mouse liver,Mouse pancreas
细胞定位	Cytoplasm,Endoplasmic reticulum membrane,Membrane,Nucleus,Single-pass type II membrane protein
纯化	Affinity purification

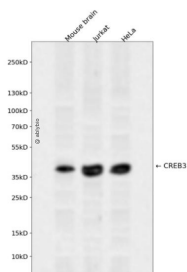
## 抗原信息

抗原信息	Recombinant fusion protein containing a sequence corresponding to amino acids 1-230 of human CREB3 (NP_006359.3).
序列	MELELDAGDQDLLAFLLLEESGDLGTAPDEAVRAPLDWALPLSEVPSDWEVDDLLCSLLSPPASLNILSSSNPCLVHHHDHTY SLPRETVSMDLESESCRKEGTQMQHMEELAEQEIARLVLTDEEKSLLEKEGLILPETLPLTKTEEQILKRVRRKIRNKRSAQ ESRRKKKVYVGGLESRLVKYTAQNMELQNKVQLLEEQNLSLLDQLRKLQAMVIEISNKTSSSSTC

## 靶点信息

研究背景	This gene encodes a transcription factor that is a member of the leucine zipper family of DNA binding proteins. This protein binds to the cAMP-response element and regulates cell proliferation. The protein interacts with host cell factor C1, which also associates with the herpes simplex virus (HSV) protein VP16 that induces transcription of HSV immediate-early genes. This protein and VP16 both bind to the same site on host cell factor C1. It is thought that the interaction between this protein and host cell factor C1 plays a role in the establishment of latency during HSV infection. This protein also plays a role in leukocyte migration, tumor suppression, and endoplasmic reticulum stress-associated protein degradation. Additional transcript variants have been identified, but their biological validity has not been determined.
基因ID	10488
基因名	CREB3
Swiss	O43889
别名	CREB3;LUMAN;LZIP;SLZIP

## 产品验证



Western blot analysis of CREB3 expressed in Mouse brain, Jurkat, HeLa using CREB3 Rabbit pAb at 1:1000. Secondary antibody: HRP Goat Anti-Rabbit IgG (H+L) at 1:5000. Lysates/proteins: 30ug per lane. Blocking buffer: 5% non-fat dry milk in TBST. Detection: ECL Enhanced Kit. Exposure time: 120s.

## 实验步骤

访问官网浏览详情: [www.ablybio.cn](http://www.ablybio.cn)