

GPLD1 Rabbit pAb

货号: AYP16662

产品信息

反应	Human,Mouse,Rat
宿主	Rabbit
克隆性	Polyclonal
预测反应	
应用	WB IHC IF/ICC
推荐浓度	WB: 1:100 - 1:500 IHC: 1:50 - 1:200 IF/ICC: 1:50 - 1:200
理论分子量	19kDa/92kDa
实测分子量	100KDa
形式	Liquid
保存条件	Store at -20°C. Avoid freeze / thaw cycles. Buffer: PBS with 0.05% proclin300,50% glycerol,pH7.3.
偶联物	Unconjugated
阳性对照	Mouse liver,Rat liver
细胞定位	Secreted
纯化	Affinity purification

抗原信息

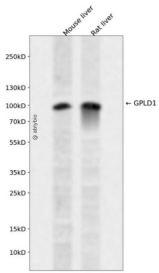
抗原信息	Recombinant fusion protein containing a sequence corresponding to amino acids 24-160 of human GPLD1 (NP_001494.2).
序列	CGLSTHVEIGHRALEFLQLHNHGRVNYRELLLEHQDAYQAGIVFPDCFYPSICKGGKFHDVSESTHWTPFLNASVHYIRENYP LPWEKDTEKLVAFLEFGITSHMAADVSWHSLGLEQGFRLRTMGAIQDFHGSYSEAHSA

靶点信息

研究背景	Many proteins are tethered to the extracellular face of eukaryotic plasma membranes by a glycosylphosphatidylinositol (GPI) anchor. The GPI-anchor is a glycolipid found on many blood cells. The protein encoded by this gene is a GPI degrading enzyme. Glycosylphosphatidylinositol specific phospholipase D1 hydrolyzes the inositol phosphate linkage in proteins anchored by phosphatidylinositol glycans, thereby releasing the attached protein from the plasma membrane.
------	---

基因ID	2822
基因名	GPLD1
Swiss	P80108
别名	GPLD1;GPIPLD;GPIPLDM;PIGPLD;PIGPLD1;PLD

产品验证



Western blot analysis of GPLD1 expressed in Mouse liver, Rat liver using GPLD1 Rabbit pAb at 1:1000. Secondary antibody: HRP Goat Anti-Rabbit IgG (H+L) at 1:5000. Lysates/proteins: 30ug per lane. Blocking buffer: 5% non-fat dry milk in TBST. Detection: ECL Enhanced Kit. Exposure time: 120s.

实验步骤

访问官网浏览详情: www.ablybio.cn