

IL20 Rabbit pAb

货号: **AYP16655**

产品信息

反应	Human,Mouse
宿主	Rabbit
克隆性	Polyclonal
预测反应	
应用	WB IHC IF/ICC
推荐浓度	WB: 1:500 - 1:2000 IHC: 1:50 - 1:100 IF/ICC: 1:50 - 1:100
理论分子量	17kDa/20kDa
实测分子量	20kDa
形式	Liquid
保存条件	Store at -20°C. Avoid freeze / thaw cycles. Buffer: PBS with 0.02% sodium azide,50% glycerol,pH7.3.
偶联物	Unconjugated
阳性对照	Mouse liver
细胞定位	Secreted
纯化	Affinity purification

抗原信息

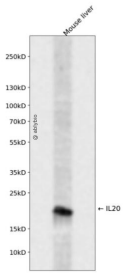
抗原信息	Recombinant fusion protein containing a sequence corresponding to amino acids 25-176 of human IL20 (NP_061194.2).
序列	LKTLNLGSCVIATNLQEIRNGFSEIRGVSQAKDGNIDIRILRRTESLQDTKPANRCCLLRHLLRRLYLDRVFKNYQTPDHYTLRK ISSLANSFLTIKKDLRLCHAHMTCHCGEEAMKKYSQILSHFEKLEPQAAVVKALGELDILLQWMEETE

靶点信息

研究背景	The protein encoded by this gene is a cytokine structurally related to interleukin 10 (IL10). This cytokine has been shown to transduce its signal through signal transducer and activator of transcription 3 (STAT3) in keratinocytes. A specific receptor for this cytokine is found to be expressed in skin and upregulated dramatically in psoriatic skin, suggesting a role for this protein in epidermal function and psoriasis.
------	--

基因ID	50604
基因名	IL20
Swiss	Q9NYY1
别名	IL20;IL-20;IL10D;ZCYTO10

产品验证



Western blot analysis of IL20 expressed in Mouse liver using IL20 Rabbit pAb at 1:1000. Secondary antibody: HRP Goat Anti-Rabbit IgG (H+L) at 1:5000. Lysates/proteins: 30ug per lane. Blocking buffer: 5% non-fat dry milk in TBST. Detection: ECL Enhanced Kit. Exposure time: 120s.

实验步骤

访问官网浏览详情: www.ablybio.cn