

KIF3A Rabbit pAb

货号: **AYP16652**

产品信息

反应	Human,Mouse,Rat
宿主	Rabbit
克隆性	Polyclonal
预测反应	
应用	WB IHC IF/ICC IP
推荐浓度	WB: 1:500 - 1:2000 IHC: 1:100 - 1:500 IF/ICC: 1:50 - 1:200 IP: 1:50 - 1:200
理论分子量	80kDa
实测分子量	80kDa
形式	Liquid
保存条件	Store at -20°C. Avoid freeze / thaw cycles. Buffer: PBS with 0.02% sodium azide,50% glycerol,pH7.3.
偶联物	Unconjugated
阳性对照	MCF-7,SW480,293T,SKOV3,HeLa,Mouse brain,Mouse ovary,Rat liver,Rat brain
细胞定位	Cell projection,Cytoplasm,cilium,cytoskeleton
纯化	Affinity purification

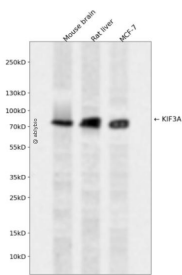
抗原信息

抗原信息	Recombinant fusion protein containing a sequence corresponding to amino acids 430-699 of human KIF3 A (NP_008985.3).
序列	RKALETKLDMEEEERNKARAELEKREKDLLKAQQEHQSLLEKLSALEKKVIVGGVDLLAKAEEQEKLLEESNMELEERRKRAEQLRRELEEKEQERLDIEEKYTSLQEEAQQGKTKLKKVWTMLMAAKSEMADLQQEHQREIEGLENIRQLSRELRLQMLIIDNFIPRDYQEMIENYVHWNEDIGEWQLKCVAYTGNNMRKQTPVPDKKEKDPFEVDLSHVYLAYTEESLRQSLMKLERPRTSKGKARPKTGRRKRSAPETVIDSLLQ

靶点信息

研究背景	Microtubule-based anterograde translocator for membranous organelles. Plus end-directed microtubule sliding activity in vitro. Plays a role in primary cilia formation. Plays a role in centriole cohesion and subdistal appendage organization and function. Regulates the formation of the subdistal appendage via recruitment of DCTN1 to the centriole. Also required for ciliary basal feet formation and microtubule anchoring to mother centriole.
基因ID	11127
基因名	KIF3A
Swiss	Q9Y496
别名	KIF3A;FLA10;KLP-20

产品验证



Western blot analysis of KIF3A expressed in Mouse brain,Rat liver,MCF-7 using KIF3A Rabbit pAb at 1:1000. Secondary antibody: HRP Goat Anti-Rabbit IgG (H+L) at 1:5000. Lysates/proteins: 30ug per lane. Blocking buffer: 5% non-fat dry milk in TBST. Detection: ECL Enhanced Kit. Exposure time: 120s.

实验步骤

访问官网浏览详情: www.ablybio.cn