

KLK11 Rabbit pAb

货号: **AYP16651**

产品信息

反应	Human,Mouse
宿主	Rabbit
克隆性	Polyclonal
预测反应	
应用	WB IHC
推荐浓度	WB: 1:500 - 1:2000 IHC: 1:100 - 1:200
理论分子量	27kDa/30kDa/31kDa/33kDa
实测分子量	27kDa/30kDa/31kDa/33kDa
形式	Liquid
保存条件	Store at -20°C. Avoid freeze / thaw cycles. Buffer: PBS with 0.02% sodium azide,50% glycerol,pH7.3.
偶联物	Unconjugated
阳性对照	
细胞定位	Golgi apparatus,Secreted
纯化	Affinity purification

抗原信息

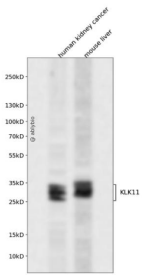
抗原信息	Recombinant fusion protein containing a sequence corresponding to amino acids 1-250 of human KLK11 (NP_001129504.1).
序列	MRILQLILLALATGLVGGETRIIKGFECKPHSQPWQAALFEKTRLLCGATLIAPRWLLTAAHCLKPRYIVHLGQHNLQKEEGCE QTRTATESFPHPGFNNSLPNKDHRNDIMLVKMASPVSITWAVRPLTLSSRCVTAGTSC LISGWGSTSSPQLRPLPHTLRCAN ITIIHQKCNAYPGNITDTMVCASVQEGGKDCSQGDSGGPLVCNQSLQGIISWGDPCAITRKPGVYTKVCKYVDWIQE TMKNN

靶点信息

研究背景	Kallikreins are a subgroup of serine proteases having diverse physiological functions. Growing evidence suggests that many kallikreins are implicated in carcinogenesis and some have potential as novel cancer and other disease biomarkers. This gene is one of the fifteen kallikrein subfamily members located in a cluster on chromosome 19. Alternate splicing and the use of alternate promoters results in multiple transcript variants encoding distinct isoforms which are differentially expressed.
------	--

基因ID	11012
基因名	KLK11
Swiss	Q9UBX7
别名	KLK11;PRSS20;TLSP

产品验证



Western blot analysis of KLK11 expressed in human kidney cancer, mouse liver using KLK11 Rabbit pAb at 1:1000. Secondary antibody: HRP Goat Anti-Rabbit IgG (H+L) at 1:5000. Lysates/proteins: 30ug per lane. Blocking buffer: 5% non-fat dry milk in TBST. Detection: ECL Enhanced Kit. Exposure time: 120s.

实验步骤

访问官网浏览详情: www.ablybio.cn