

LECT1 Rabbit pAb

货号: **AYP16649**

产品信息

反应	Human,Mouse
宿主	Rabbit
克隆性	Polyclonal
预测反应	
应用	WB IF/ICC
推荐浓度	WB: 1:500 - 1:2000 IF/ICC: 1:50 - 1:100
理论分子量	36kDa/37kDa
实测分子量	37kDa
形式	Liquid
保存条件	Store at -20°C. Avoid freeze / thaw cycles. Buffer: PBS with 0.02% sodium azide,50% glycerol,pH7.3.
偶联物	Unconjugated
阳性对照	Mouse liver
细胞定位	Endomembrane system,Secreted,Single-pass membrane protein,extracellular matrix,extracellular space
纯化	Affinity purification

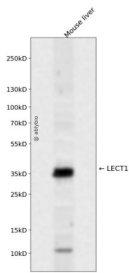
抗原信息

抗原信息	Recombinant fusion protein containing a sequence corresponding to amino acids 75-334 of human LECT1 (NP_008946.1).
序列	VHYTMSINGKLQDGSMEIDAGNNLETFKMGSGAEEAIVNDFQNGITGIRFAGGEKCYIKAQVKARIPEVGAVTKQSISK LEGKIMPVKYEENSLIWVAVDQPVKDNSFLSSKVLELCGDLPIFWLKPYPKEIQRERREVVRKIVPTTTKRPHSGPRSNPGA GRLNNETRPSVQEDSQAFNPDPYHQEGESMTFDPRLDHEGICCIERRSYTHCQKICEPLGGYYPWPYNYQGCRSAC RVIMPCSWWWARILGMV

靶点信息

研究背景	This gene encodes a glycosylated transmembrane protein that is cleaved to form a mature, secreted protein. The N-terminus of the precursor protein shares characteristics with other surfactant proteins and is sometimes called chondrosurfactant protein although no biological activity has yet been defined for it. The C-terminus of the precursor protein contains a 25 kDa mature protein called leukocyte cell-derived chemotaxin-1 or chondromodulin-1. The mature protein promotes chondrocyte growth and inhibits angiogenesis. This gene is expressed in the avascular zone of prehypertrophic cartilage and its expression decreases during chondrocyte hypertrophy and vascular invasion. The mature protein likely plays a role in endochondral bone development by permitting cartilaginous anlagen to be vascularized and replaced by bone. It may be involved also in the broad control of tissue vascularization during development. Alternative splicing results in multiple transcript variants encoding different isoforms.
基因ID	11061
基因名	CNMD
Swiss	O75829
别名	CNMD;BRICD3;CHM-I;CHM1;LECT1;MYETS1

产品验证



Western blot analysis of LECT1 expressed in Mouse liver using LECT1 Rabbit pAb at 1:1000. Secondary antibody: HRP Goat Anti-Rabbit IgG (H+L) at 1:5000. Lysates/proteins: 30ug per lane. Blocking buffer: 5% non-fat dry milk in TBST. Detection: ECL Enhanced Kit. Exposure time: 120s.

实验步骤

访问官网浏览详情: www.ablybio.cn