

MAPKAP1 Rabbit pAb

货号: **AYP16647**

产品信息

反应	Human,Mouse,Rat
宿主	Rabbit
克隆性	Polyclonal
预测反应	
应用	WB IHC
推荐浓度	WB: 1:500 - 1:1000 IHC: 1:50 - 1:200
理论分子量	36kDa/37kDa/41kDa/53kDa/54kDa/59kDa
实测分子量	69KDa/71KDa
形式	Liquid
保存条件	Store at -20°C. Avoid freeze / thaw cycles. Buffer: PBS with 0.01% thiomersal,50% glycerol,pH7.3.
偶联物	Unconjugated
阳性对照	HeLa,HepG2,MCF7,Mouse kidney
细胞定位	Cell membrane,Cytoplasmic vesicle,Nucleus,Peripheral membrane protein
纯化	Affinity purification

抗原信息

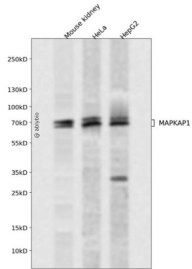
抗原信息	Recombinant fusion protein containing a sequence corresponding to amino acids 360-522 of MAPKAP1 (NP_001006618.1).
序列	DGVFEEDSQIDIATVQDMLSSHYYKSFKVSMIHRLRFTTDVQLGISGDKVEIDPVTNQQKASTKFWIKQKPISIDSDLLCADC LAEKSPSHAIFKLTLYLSNHDKHLYFESDAATVNEIVLKVNYILESRASTARADYFAQKQRKLNRRTSFSFQKEKSGQQ

靶点信息

研究背景	This gene encodes a protein that is highly similar to the yeast SIN1 protein, a stress-activated protein kinase. Alternatively spliced transcript variants encoding distinct isoforms have been described. Alternate polyadenylation sites as well as alternate 3' UTRs have been identified for transcripts of this gene.
基因ID	79109

基因名	MAPKAP1
Swiss	Q9BPZ7
别名	MAPKAP1;JC310;MIP1;SIN1;SIN1b;SIN1g

产品验证



Western blot analysis of MAPKAP1 expressed in Mouse kidney, HeLa, HepG2 using MAPKAP1 Rabbit pAb at 1:1000. Secondary antibody: HRP Goat Anti-Rabbit IgG (H+L) at 1:5000. Lysates/proteins: 30ug per lane. Blocking buffer: 5% non-fat dry milk in TBST. Detection: ECL Enhanced Kit. Exposure time: 120s.

实验步骤

访问官网浏览详情: www.ablybio.cn