

# MFI2 Rabbit pAb

货号: **AYP16645**

## 产品信息

反应	Human,Mouse,Rat
宿主	Rabbit
克隆性	Polyclonal
预测反应	
应用	WB IF/ICC
推荐浓度	<b>WB:</b> 1:500 - 1:2000 <b>IF/ICC:</b> 1:50 - 1:200
理论分子量	32kDa/80kDa
实测分子量	110kDa
形式	Liquid
保存条件	Store at -20°C. Avoid freeze / thaw cycles. Buffer: PBS with 0.02% sodium azide,50% glycerol,pH7.3.
偶联物	Unconjugated
阳性对照	293T,SW480,A375,Mouse liver,Mouse brain,Mouse thymus
细胞定位	Cell membrane,GPI-anchor,Lipid-anchor
纯化	Affinity purification

## 抗原信息

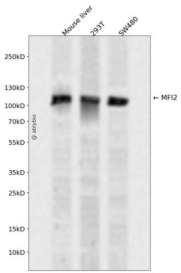
抗原信息	Recombinant fusion protein containing a sequence corresponding to amino acids 20-200 of human MFI2 (NP_201573.1).
序列	GMEVRWCATSDPEQHKCGNMSEAFREAGIQPSLLCVRGTSADHCVQLIAAQEADAITLDGGAIYEAGKEHGLKPVVGEVYDQEVGTSYYAVAVVRRSSHVTIDTLKGVKSCHTGINRTVGWNVVPGYLVESGRLSVMGCDVLKAVSDYFGGSCVPGAGETSYSSESLCRLCRGDSSGEGVCD

## 靶点信息

研究背景	The protein encoded by this gene is a cell-surface glycoprotein found on melanoma cells. The protein shares sequence similarity and iron-binding properties with members of the transferrin superfamily. The importance of the iron binding function has not yet been identified. This gene resides in the same region of chromosome 3 as members of the transferrin superfamily. Alternative splicing results in two transcript variants.
------	--

基因ID	4241
基因名	MELTF
Swiss	P08582
别名	MELTF;CD228;MAP97;MF12;MTF1;MTf

## 产品验证



Western blot analysis of MF12 expressed in Mouse liver,293T,SW480 using MF12 Rabbit pAb at 1:1000. Secondary antibody: HRP Goat Anti-Rabbit IgG (H+L) at 1:5000. Lysates/proteins: 30ug per lane. Blocking buffer: 5% non-fat dry milk in TBST. Detection: ECL Enhanced Kit. Exposure time: 120s.

## 实验步骤

访问官网浏览详情: [www.ablybio.cn](http://www.ablybio.cn)