

MLPH Rabbit pAb

货号: **AYP16640**

产品信息

反应	Human,Mouse,Rat
宿主	Rabbit
克隆性	Polyclonal
预测反应	
应用	WB IHC IF/ICC
推荐浓度	WB: 1:500 - 1:2000 IHC: 1:50 - 1:200 IF/ICC: 1:50 - 1:200
理论分子量	50kDa/52kDa/60kDa/62kDa/65kDa
实测分子量	75kDa
形式	Liquid
保存条件	Store at -20°C. Avoid freeze / thaw cycles. Buffer: PBS with 0.02% sodium azide,50% glycerol,pH7.3.
偶联物	Unconjugated
阳性对照	Mouse stomach
细胞定位	Cytoplasm
纯化	Affinity purification

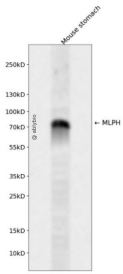
抗原信息

抗原信息	Recombinant fusion protein containing a sequence corresponding to amino acids 301-600 of human MLP H (NP_077006.1).
序列	EQLPLQYLADVDTSDDEESIRAHVMASHHKKRRGRASSESQIFELNKHISAVECLLTYLENTVVPPLAKGLGAGVRTEADVEE EALRRKLEELTSNVSDQETSSEEEEEAKDEKAEPNRDKSVGPLPQADPEVGTAAHQTNRQEKSPQDPGDPVQYNRTTDEE LSELEDRAVAVTASEVQQAEEVSDIESRIAALRAAGLTVKPSGKPRRKSNIPLPRVAGKLGKRPEDPNADPSSEAKAMAV PYLLRRKFSNSLKSQKDDDSFDRKSVYRGSALTQRNPARKGMASHTFAKPVVAHQ

靶点信息

研究背景	This gene encodes a member of the exophilin subfamily of Rab effector proteins. The protein forms a ternary complex with the small Ras-related GTPase Rab27A in its GTP-bound form and the motor protein myosin Va. A similar protein complex in mouse functions to tether pigment-producing organelles called melanosomes to the actin cytoskeleton in melanocytes, and is required for visible pigmentation in the hair and skin. A mutation in this gene results in Griscelli syndrome type 3, which is characterized by a silver-gray hair color and abnormal pigment distribution in the hair shaft. Several alternatively spliced transcript variants encoding different isoforms have been found for this gene.
基因ID	79083
基因名	MLPH
Swiss	Q9BV36
别名	MLPH;SLAC2-A

产品验证



Western blot analysis of MLPH expressed in Mouse stomach using MLPH Rabbit pAb at 1:1000. Secondary antibody: HRP Goat Anti-Rabbit IgG (H+L) at 1:5000. Lysates/proteins: 30ug per lane. Blocking buffer: 5% non-fat dry milk in TBST. Detection: ECL Enhanced Kit. Exposure time: 120s.

实验步骤

访问官网浏览详情: www.ablybio.cn