

NHLRC1 Rabbit pAb

货号: **AYP16637**

产品信息

反应	Human,Mouse,Rat
宿主	Rabbit
克隆性	Polyclonal
预测反应	
应用	WB IHC
推荐浓度	WB: 1:500 - 1:2000 IHC: 1:50 - 1:200
理论分子量	42kDa
实测分子量	42kDa
形式	Liquid
保存条件	Store at -20°C. Avoid freeze / thaw cycles. Buffer: PBS with 0.01% thiomersal,50% glycerol,pH7.3.
偶联物	Unconjugated
阳性对照	Mouse liver,Mouse brain,Mouse heart,Rat brain,Rat heart,Rat liver
细胞定位	Endoplasmic reticulum,Nucleus
纯化	Affinity purification

抗原信息

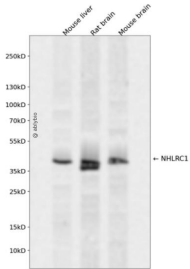
抗原信息	Recombinant fusion protein containing a sequence corresponding to amino acids 79-280 of human NHLRC1 (NP_940988.2).
序列	DTSDCLPVLHLLIELLGSLRQSPAHAAPSAPGALTCHHTFGGWGTLVNPTGLALCPKTGRVVVVDGRRRVKIFDSSG GCAHQFGEKGDAAQDIRYPVDVTITNDCHVVVTDAGDRSIKVFDFFGQIKLVIGGQFSLPWGVETTPQNGIVVTDAEAGS LHLLDVDFAEGLRRTERLQAHLCPNPRGVAVSWLTGAIIVLE

靶点信息

研究背景	The protein encoded by this gene is a single subunit E3 ubiquitin ligase. Laforin is polyubiquitinated by the encoded protein. Defects in this intronless gene lead to an accumulation of laforin and onset of Lafora disease, also known as progressive myoclonic epilepsy type 2 (EPM2).
基因ID	378884

基因名	NHLRC1
Swiss	Q6VVB1
别名	NHLRC1;EPM2A;EPM2B;MALIN;bA204B7.2

产品验证



Western blot analysis of NHLRC1 expressed in Mouse liver,Rat brain,Mouse brain using NHLRC1 Rabbit pAb at 1:1000. Secondary antibody: HRP Goat Anti-Rabbit IgG (H+L) at 1:5000. Lysates/proteins: 30ug per lane. Blocking buffer: 5% non-fat dry milk in TBST. Detection: ECL Enhanced Kit. Exposure time: 12 0s.

实验步骤

访问官网浏览详情: www.ablybio.cn