

# PMCH Rabbit pAb

货号: **AYP16631**

## 产品信息

反应	Human,Mouse
宿主	Rabbit
克隆性	Polyclonal
预测反应	
应用	WB
推荐浓度	<b>WB:</b> 1:500 - 1:2000
理论分子量	18kDa
实测分子量	19kDa
形式	Liquid
保存条件	Store at -20°C. Avoid freeze / thaw cycles. Buffer: PBS with 0.02% sodium azide,50% glycerol,pH7.3.
偶联物	Unconjugated
阳性对照	HT-29,MCF7,Mouse liver
细胞定位	Secreted
纯化	Affinity purification

## 抗原信息

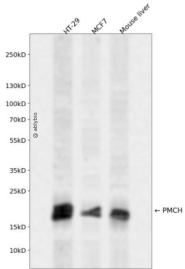
抗原信息	Recombinant fusion protein containing a sequence corresponding to amino acids 22-165 of human PMCH (NP_002665.2).
序列	ILLSASKSIRNLDDDMVFNTFRLGKGFQKEDTAEKSVIAPSLEQYKNDESSFMNEEENKVSKNKGSKHNFLNHGLPLNLAI KPYLALKGSVAFPAENGVQNTTESTQEKREIGDEENSAKFIGRRDFDMLRCMLGRVYRPCWQV

## 靶点信息

研究背景	This gene encodes a preproprotein that is proteolytically processed to generate multiple protein products . These products include melanin-concentrating hormone (MCH), neuropeptide-glutamic acid-isoleucine ( NEI), and neuropeptide-glycine-glutamic acid (NGE). Melanin-concentrating hormone is a 19-amino acid neuropeptide that stimulates hunger and may additionally regulate energy homeostasis, reproductive function, and sleep. Pseudogenes of this gene have been identified on chromosome 5.
基因ID	5367

基因名	PMCH
Swiss	P20382
别名	PMCH;MCH;ppMCH;pro-MCH

## 产品验证



Western blot analysis of PMCH expressed in HT-29, MCF7, Mouse liver using PMCH Rabbit pAb at 1:1000. Secondary antibody: HRP Goat Anti-Rabbit IgG (H+L) at 1:5000. Lysates/proteins: 30ug per lane. Blocking buffer: 5% non-fat dry milk in TBST. Detection: ECL Enhanced Kit. Exposure time: 120s.

## 实验步骤

访问官网浏览详情: [www.ablybio.cn](http://www.ablybio.cn)