

# RAPSN Rabbit pAb

货号: **AYP16619**

## 产品信息

反应	Human,Mouse,Rat
宿主	Rabbit
克隆性	Polyclonal
预测反应	
应用	WB IHC
推荐浓度	<b>WB:</b> 1:500 - 1:2000 <b>IHC:</b> 1:50 - 1:100
理论分子量	39kDa/46kDa
实测分子量	43kDa
形式	Liquid
保存条件	Store at -20°C. Avoid freeze / thaw cycles. Buffer: PBS with 0.02% sodium azide,50% glycerol,pH7.3.
偶联物	Unconjugated
阳性对照	B cells,Mouse skeletal muscle,Mouse brain,Rat skeletal muscle,Rat brain
细胞定位	Cell junction,Cell membrane,Cytoplasm,Cytoplasmic side,Peripheral membrane protein,cytoskeleton,post synaptic cell membrane,synapse
纯化	Affinity purification

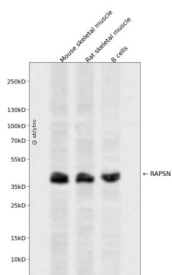
## 抗原信息

抗原信息	Recombinant fusion protein containing a sequence corresponding to amino acids 1-353 of human RAPSN (NP_116034.2).
序列	MGQDQTKQQIEKGLQLYQSNQTEKALQVWTKVLEKSSDLMGRFRVLGCLVTAHSEMGRYKEMLKFAVVQIDTARELED ADFLLESYLNLARSNEKLCEFHKTISYCKTCLGLPGTRAGAQLGGQVSLSMGNAFLGLSVFQKALESFEKALRYAHNNDDA MLECRVCCSLGSFYAQVKDYEKALFFPCKAAELVNYYGKGWLSLKYRAMSQYHMAVAYRLLGRLGSAMECCCEESMKIALQ HGDRPLQALCLLCFADIHRSRGDLELSQLKLHCLSESIYRSKGLQRELAHVVRFHECVEETELYCGLCGESIGEKNSRLQA LPCSHIFHLRCLQNNGTRSCPNCRRSSMKPGFV

## 靶点信息

研究背景	This gene encodes a member of a family of proteins that are receptor associated proteins of the synapse. The encoded protein contains a conserved cAMP-dependent protein kinase phosphorylation site, and plays a critical role in clustering and anchoring nicotinic acetylcholine receptors at synaptic sites by linking the receptors to the underlying postsynaptic cytoskeleton, possibly by direct association with actin or spectrin. Mutations in this gene may play a role in postsynaptic congenital myasthenic syndromes. Alternatively spliced transcript variants encoding multiple isoforms have been observed for this gene.
基因ID	5913
基因名	RAPSN
Swiss	Q13702
别名	RAPSN;CMS11;CMS4C;FADS;RAPSYN;RNF205

## 产品验证



Western blot analysis of RAPSIN expressed in Mouse skeletal muscle, Rat skeletal muscle, B cells using RAPSIN Rabbit pAb at 1:1000. Secondary antibody: HRP Goat Anti-Rabbit IgG (H+L) at 1:5000. Lysates/proteins: 30ug per lane. Blocking buffer: 5% non-fat dry milk in TBST. Detection: ECL Enhanced Kit. Exposure time: 120s.

## 实验步骤

访问官网浏览详情: [www.ablybio.cn](http://www.ablybio.cn)