

# SCYL1 Rabbit pAb

货号: **AYP16613**

## 产品信息

|       |  |
|-------|--|
| 反应    | Human,Mouse,Rat  |
| 宿主    | Rabbit   |
| 克隆性   | Polyclonal   |
| 预测反应  |  |
| 应用    | WB   |
| 推荐浓度  | <b>WB:</b> 1:500 - 1:1000  |
| 理论分子量 | 69kDa/78kDa/86kDa/88kDa/89kDa  |
| 实测分子量 | 90KDa  |
| 形式    | Liquid   |
| 保存条件  | Store at -20°C. Avoid freeze / thaw cycles.<br>Buffer: PBS with 0.02% sodium azide,50% glycerol,pH7.3.   |
| 偶联物   | Unconjugated   |
| 阳性对照  | 293T   |
| 细胞定位  | Cytoplasm,Endoplasmic reticulum-Golgi intermediate compartment,Golgi apparatus,Nucleus,centrosome,<br>cis-Golgi network,cytoskeleton,microtubule organizing center |
| 纯化    | Affinity purification  |

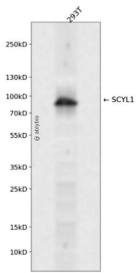
## 抗原信息

|      |  |
|------|--|
| 抗原信息 | Recombinant fusion protein containing a sequence corresponding to amino acids 460-740 of human SCYL1 (NP_065731.3).  |
| 序列   | SASTRHRVLTSAFSRATRDPFAPSRVAGVLGFAATHNLYSMNDCAQKILPVLGCLTVDPEKSVRDQAFKAIRSFLSKLESV<br>SEDPTQLEEVKDVHAASSPGMGAAASWAGWAVTGVSSLTSKLIRSHPTTAPTETNIPQRPTPEGVPAPAPTVPATPTT<br>SGHWETQEEDKDTAEDSSTADRWDDEDWGSLEQEAESVLAQQDDWSTGGQVSRASQVNSDHHKSSKSPESDWSS<br>WEAEGSWEQGWQEPSSQEPDGTGLRLASEYNWGGPESSDKGDPFA |

## 靶点信息

|       |   |
|-------|---|
| 研究背景  | This gene encodes a transcriptional regulator belonging to the SCY1-like family of kinase-like proteins. The protein has a divergent N-terminal kinase domain that is thought to be catalytically inactive, and can bind specific DNA sequences through its C-terminal domain. It activates transcription of the telomerase reverse transcriptase and DNA polymerase beta genes. The protein has been localized to the nucleus, and also to the cytoplasm and centrosomes during mitosis. Multiple transcript variants encoding different isoforms have been found for this gene. |
| 基因ID  | 57410   |
| 基因名   | SCYL1   |
| Swiss | Q96KG9  |
| 别名    | SCYL1;GKLP;HT019;NKTL;NTKL;P105;SCAR21;TAPK;TEIF;TRAP   |

## 产品验证



Western blot analysis of SCYL1 expressed in 293T using SCYL1 Rabbit pAb at 1:1000. Secondary antibody : HRP Goat Anti-Rabbit IgG (H+L) at 1:5000. Lysates/proteins: 30ug per lane. Blocking buffer: 5% non-fat dry milk in TBST. Detection: ECL Enhanced Kit. Exposure time: 120s.

## 实验步骤

访问官网浏览详情: [www.ablybio.cn](http://www.ablybio.cn)