

TALDO1 Rabbit pAb

货号: **AYP16604**

产品信息

反应	Human,Mouse
宿主	Rabbit
克隆性	Polyclonal
预测反应	
应用	WB IF/ICC
推荐浓度	WB: 1:500 - 1:2000 IF/ICC: 1:10 - 1:100
理论分子量	37kDa
实测分子量	38kDa
形式	Liquid
保存条件	Store at -20°C. Avoid freeze / thaw cycles. Buffer: PBS with 0.02% sodium azide,50% glycerol,pH7.3.
偶联物	Unconjugated
阳性对照	A-431,SW480,Mouse brain,Mouse kidney
细胞定位	Cytoplasm
纯化	Affinity purification

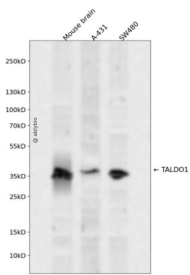
抗原信息

抗原信息	Recombinant fusion protein containing a sequence corresponding to amino acids 1-337 of human TALDO 1 (NP_006746.1).
序列	MSSSPVKRQRMESALDQLKQFTTVVADTGDFHAIDEYKPDATTNPSLILAAAQMPAYQELVEEAIAYGRKLGGSQEDQI KNAIDKLFVLFGAIEILKKIPGRVSTVEDARLSFDKAMVARARRLIELYKEAGISKDRILIKLSSTWEGIQAGKELEEQHGHC NMTLLFSFAQAVACAEAGVTLISPFVGRILDWHVANTDKKSYEPLEDPGVKSVTKIYNYYKKFSYKTIVMGASFRNTGEIKA LAGCDFLTISPKLLGELLQDNAKLVVLSAKAAQASDLEKIHLEKSFRLHNEQMAVEKLSDGIRKFAADAVKLERMLT ERMFNAENGK

靶点信息

研究背景	Transaldolase 1 is a key enzyme of the nonoxidative pentose phosphate pathway providing ribose-5-phosphate for nucleic acid synthesis and NADPH for lipid biosynthesis. This pathway can also maintain glutathione at a reduced state and thus protect sulfhydryl groups and cellular integrity from oxygen radicals. The functional gene of transaldolase 1 is located on chromosome 11 and a pseudogene is identified on chromosome 1 but there are conflicting map locations. The second and third exon of this gene were developed by insertion of a retrotransposable element. This gene is thought to be involved in multiple sclerosis.
基因ID	6888
基因名	TALDO1
Swiss	P37837
别名	TALDO1;TAL;TAL-H;TALDOR;TALH

产品验证



Western blot analysis of TALDO1 expressed in Mouse brain,A-431,SW480 using TALDO1 Rabbit pAb at 1:1000. Secondary antibody: HRP Goat Anti-Rabbit IgG (H+L) at 1:5000. Lysates/proteins: 30ug per lane. Blocking buffer: 5% non-fat dry milk in TBST. Detection: ECL Enhanced Kit. Exposure time: 120s.

实验步骤

访问官网浏览详情: www.ablybio.cn