

ZBED1 Rabbit pAb

货号: **AYP16590**

产品信息

反应	Human
宿主	Rabbit
克隆性	Polyclonal
预测反应	
应用	WB IHC IF/ICC
推荐浓度	WB: 1:500 - 1:2000 IHC: 1:50 - 1:200 IF/ICC: 1:50 - 1:200
理论分子量	78kDa
实测分子量	108kDa
形式	Liquid
保存条件	Store at -20°C. Avoid freeze / thaw cycles. Buffer: PBS with 0.02% sodium azide,50% glycerol,pH7.3.
偶联物	Unconjugated
阳性对照	HeLa,BT-474
细胞定位	Nucleus
纯化	Affinity purification

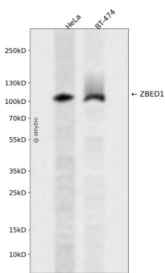
抗原信息

抗原信息	Recombinant fusion protein containing a sequence corresponding to amino acids 1-280 of human ZBED1 (NP_001164607.1).
序列	MENKSLESSQTDLKLVAHPRAKSKVWKYFGFDTNAEGCILQWKKIYCRICMAQIAYSGNTSNLSYHLEKNHPEEFCEVKS NTEQMREAFATAFSKLPKPESSQQPGQDALAVKAGHGYDSKKQQLTAAVLGLICEGLYPASIVDEPTFKVLLKTADPRYEL PSRKYISTKAIPKYGAVREVILKELAEATWCGISTDMWRSENQNRAYVTAAHFLGLGAPNCLSMGSRCLKTFEVPEENTA ETITRVLYEVFIEWGISAKVFGATTNYGKDIVKACS

靶点信息

研究背景	This gene is located in the pseudoautosomal region 1 (PAR1) of X and Y chromosomes. It was earlier identified as a gene with similarity to Ac transposable elements, however, was found not to have transposase activity. Later studies show that this gene product is localized in the nucleus and functions as a transcription factor. It binds to DNA elements found in the promoter regions of several genes related to cell proliferation, such as histone H1, hence may have a role in regulating genes related to cell proliferation. Alternatively spliced transcript variants with different 5' untranslated region have been found for this gene.
基因ID	9189
基因名	ZBED1
Swiss	O96006
别名	ZBED1;ALTE;DREF;TRAMP;hDREF

产品验证



Western blot analysis of ZBED1 expressed in HeLa, BT-474 using ZBED1 Rabbit pAb at 1:1000. Secondary antibody: HRP Goat Anti-Rabbit IgG (H+L) at 1:5000. Lysates/proteins: 30ug per lane. Blocking buffer: 5 % non-fat dry milk in TBST. Detection: ECL Enhanced Kit. Exposure time: 120s.

实验步骤

访问官网浏览详情: www.ablybio.cn