

# DCLRE1B Rabbit pAb

货号: **AYP16588**

## 产品信息

反应	Human,Mouse
宿主	Rabbit
克隆性	Polyclonal
预测反应	
应用	WB
推荐浓度	<b>WB:</b> 1:500 - 1:2000
理论分子量	60kDa
实测分子量	60kDa
形式	Liquid
保存条件	Store at -20°C. Avoid freeze / thaw cycles. Buffer: PBS with 0.02% sodium azide,50% glycerol,pH7.3.
偶联物	Unconjugated
阳性对照	THP-1
细胞定位	Chromosome,Cytoplasm,Nucleus,centrosome,cytoskeleton,microtubule organizing center,telomere
纯化	Affinity purification

## 抗原信息

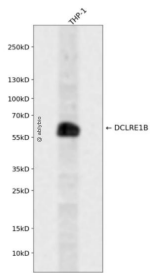
抗原信息	Recombinant fusion protein containing a sequence corresponding to amino acids 323-532 of human DCLRE1B (NP_073747.1).
序列	VQQYMSSSRKPSLLWLLERRLRPRTQGVVFESPEESADQSQADRDSKAKKKEKLSPPADLEKQPSSHPLRIKKQLFP DLYSKEWNKAVPFCEQKRVTMLTAPLGFVHLRSTDEEFISQKTREEIGLSPLVPMGDDDDGGPEATGNQSAWMGHG SPLSHSSKGTPLLATEFRGLALKYLLTPVNFFQAGYSSRRFDQQVEKYHKPC

## 靶点信息

研究背景	
基因ID	64858
基因名	DCLRE1B

Swiss	Q9H816
别名	DCLRE1B;APOLLO;SNM1B;SNMIB

## 产品验证



Western blot analysis of DCLRE1B expressed in THP-1 using DCLRE1B Rabbit pAb at 1:1000. Secondary antibody: HRP Goat Anti-Rabbit IgG (H+L) at 1:5000. Lysates/proteins: 30ug per lane. Blocking buffer: 5% non-fat dry milk in TBST. Detection: ECL Enhanced Kit. Exposure time: 120s.

## 实验步骤

访问官网浏览详情: [www.ablybio.cn](http://www.ablybio.cn)