

POLR2F Rabbit pAb

货号: **AYP16582**

产品信息

反应	Human,Rat
宿主	Rabbit
克隆性	Polyclonal
预测反应	
应用	WB IHC
推荐浓度	WB: 1:500 - 1:2000 IHC: 1:50 - 1:100
理论分子量	14kDa
实测分子量	14kDa
形式	Liquid
保存条件	Store at -20°C. Avoid freeze / thaw cycles. Buffer: PBS with 0.01% thiomersal,50% glycerol,pH7.3.
偶联物	Unconjugated
阳性对照	Rat heart
细胞定位	Nucleus
纯化	Affinity purification

抗原信息

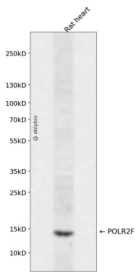
抗原信息	Recombinant fusion protein containing a sequence corresponding to amino acids 1-127 of human POLR2F (NP_068809.1).
序列	MSDNEDNFDGDDFDDVEEDEGLDDLENAEEEGQENVEILPSGERPQANQKRITTPYMTKYERARVLGTRALQIAMCAPV MVELEGETDPLLIAMKELKARKIPIIIIRRYLPDGSYEDWGVDELIITD

靶点信息

研究背景	This gene encodes the sixth largest subunit of RNA polymerase II, the polymerase responsible for synthesizing messenger RNA in eukaryotes. In yeast, this polymerase subunit, in combination with at least two other subunits, forms a structure that stabilizes the transcribing polymerase on the DNA template. Alternative splicing results in multiple transcript variants.
基因ID	5435

基因名	POLR2F
Swiss	P61218
别名	POLR2F;HRBP14.4;POLRF;RPABC14.4;RPABC2;RPB14.4;RPB6;RPC15

产品验证



Western blot analysis of POLR2F expressed in Rat heart using POLR2F Rabbit pAb at 1:1000. Secondary antibody: HRP Goat Anti-Rabbit IgG (H+L) at 1:5000. Lysates/proteins: 30ug per lane. Blocking buffer: 5% non-fat dry milk in TBST. Detection: ECL Enhanced Kit. Exposure time: 120s.

实验步骤

访问官网浏览详情: www.ablybio.cn