

AMY1A Rabbit pAb

货号: **AYP16576**

产品信息

反应	Human,Mouse,Rat
宿主	Rabbit
克隆性	Polyclonal
预测反应	
应用	WB
推荐浓度	WB: 1:500 - 1:2000
理论分子量	57kDa
实测分子量	48kDa
形式	Liquid
保存条件	Store at -20°C. Avoid freeze / thaw cycles. Buffer: PBS with 0.02% sodium azide,50% glycerol,pH7.3.
偶联物	Unconjugated
阳性对照	SKOV3,Mouse liver,Mouse pancreas,Mouse heart,Rat liver,Rat heart
细胞定位	Secreted
纯化	Affinity purification

抗原信息

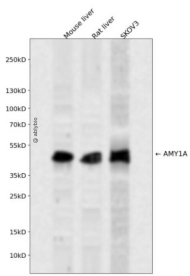
抗原信息	Recombinant fusion protein containing a sequence corresponding to amino acids 16-200 of human AMY1 A (NP_004029.2).
序列	QYSSNTQQGRTSIVHLFEWRWVDIALECERYLAPKGGVQVSPNENVAIHNPFRPWERYQPVSYKLCTRSGNEDEF RNMVTRCNNVGVRIYVDAVINHMCNAVSAGTSSTCGSYFNPGSRDFPAVPYSGWDFNDGKCKTGSGDIENYNDATQ VRDCRLSGLLDLALGKDYVRSKIAEYMNH

靶点信息

研究背景	Amylases are secreted proteins that hydrolyze 1,4-alpha-glucoside bonds in oligosaccharides and polysaccharides, and thus catalyze the first step in digestion of dietary starch and glycogen. The human genome has a cluster of several amylase genes that are expressed at high levels in either salivary gland or pancreas. This gene encodes an amylase isoenzyme produced by the salivary gland. Alternative splicing results in multiple transcript variants encoding the same protein.
------	---

基因ID	276
基因名	
Swiss	P04745
别名	AMY1A;AMY1

产品验证



Western blot analysis of AMY1A expressed in Mouse liver,Rat liver,SKOV3 using AMY1A Rabbit pAb at 1:1000. Secondary antibody: HRP Goat Anti-Rabbit IgG (H+L) at 1:5000. Lysates/proteins: 30ug per lane. Blocking buffer: 5% non-fat dry milk in TBST. Detection: ECL Enhanced Kit. Exposure time: 120s.

实验步骤

访问官网浏览详情: www.ablybio.cn