

ATP2B2 Rabbit pAb

货号: **AYP16573**

产品信息

反应	Human,Mouse,Rat
宿主	Rabbit
克隆性	Polyclonal
预测反应	
应用	WB
推荐浓度	WB: 1:500 - 1:1000
理论分子量	127-136kDa
实测分子量	137kDa
形式	Liquid
保存条件	Store at -20°C. Avoid freeze / thaw cycles. Buffer: PBS with 0.05% proclin300,50% glycerol,pH7.3.
偶联物	Unconjugated
阳性对照	SH-SY5Y,Mouse ovary,Mouse lung,Mouse liver,Rat liver
细胞定位	Cell junction,Cell membrane,Multi-pass membrane protein,synapse
纯化	Affinity purification

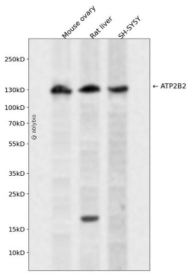
抗原信息

抗原信息	Recombinant fusion protein containing a sequence corresponding to amino acids 1-80 of human ATP2B2 (NP_001674.2).
序列	MGDMTNSDFYSKNQRNESSHGGEFGCTMEELRSLMELRGTEAVVKIKETYGDTEAICRRLKTSPEGLPGTAPDLEKRKQ

靶点信息

研究背景	The protein encoded by this gene belongs to the family of P-type primary ion transport ATPases characterized by the formation of an aspartyl phosphate intermediate during the reaction cycle. These enzymes remove bivalent calcium ions from eukaryotic cells against very large concentration gradients and play a critical role in intracellular calcium homeostasis. The mammalian plasma membrane calcium ATPase isoforms are encoded by at least four separate genes and the diversity of these enzymes is further increased by alternative splicing of transcripts. The expression of different isoforms and splice variants is regulated in a developmental, tissue- and cell type-specific manner, suggesting that these pumps are functionally adapted to the physiological needs of particular cells and tissues. This gene encodes the plasma membrane calcium ATPase isoform 2. Alternatively spliced transcript variants encoding different isoforms have been identified.
基因ID	491
基因名	ATP2B2
Swiss	Q01814
别名	ATP2B2;PMCA2;PMCA2a;PMCA2i

产品验证



Western blot analysis of ATP2B2 expressed in Mouse ovary, Rat liver, SH-SY5Y using ATP2B2 Rabbit pAb at 1:1000. Secondary antibody: HRP Goat Anti-Rabbit IgG (H+L) at 1:5000. Lysates/proteins: 30ug per lane. Blocking buffer: 5% non-fat dry milk in TBST. Detection: ECL Enhanced Kit. Exposure time: 120s.

实验步骤

访问官网浏览详情: www.ablybio.cn