

CLK1 Rabbit pAb

货号: **AYP16567**

产品信息

反应	Human,Mouse
宿主	Rabbit
克隆性	Polyclonal
预测反应	
应用	WB
推荐浓度	WB: 1:500 - 1:2000
理论分子量	16kDa/57kDa/61kDa
实测分子量	55kDa
形式	Liquid
保存条件	Store at -20°C. Avoid freeze / thaw cycles. Buffer: PBS with 0.02% sodium azide,50% glycerol,pH7.3.
偶联物	Unconjugated
阳性对照	HepG2,Jurkat
细胞定位	Nucleus
纯化	Affinity purification

抗原信息

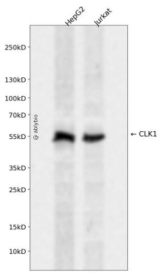
抗原信息	Recombinant fusion protein containing a sequence corresponding to amino acids 1-130 of human CLK1 (NP_004062.2).
序列	MRHSKRTYCPDWDKDWYGKWRSSSSHKRRKRSHSSAQENKRCYKYNHMKCDSHYLESRSINEKDYHSRRYIDEYR NDYTQGCEPGHRQRDHESRYQNHSSKSSGRSGRSSYKSKHRIHHSTSHRRSHG

靶点信息

研究背景	This gene encodes a member of the CDC2-like (or LAMMER) family of dual specificity protein kinases. In the nucleus, the encoded protein phosphorylates serine/arginine-rich proteins involved in pre-mRNA processing, releasing them into the nucleoplasm. The choice of splice sites during pre-mRNA processing may be regulated by the concentration of transacting factors, including serine/arginine rich proteins. Therefore, the encoded protein may play an indirect role in governing splice site selection. Multiple transcript variants encoding different isoforms have been found for this gene.
------	--

基因ID	1195
基因名	CLK1
Swiss	P49759
别名	CLK1;CLK;CLK/STY;STY

产品验证



Western blot analysis of CLK1 expressed in HepG2, Jurkat using CLK1 Rabbit pAb at 1:1000. Secondary antibody: HRP Goat Anti-Rabbit IgG (H+L) at 1:5000. Lysates/proteins: 30ug per lane. Blocking buffer: 5% non-fat dry milk in TBST. Detection: ECL Enhanced Kit. Exposure time: 120s.

实验步骤

访问官网浏览详情: www.ablybio.cn