

CRY2 Rabbit pAb

货号: **AYP16561**

产品信息

反应	Human,Rat
宿主	Rabbit
克隆性	Polyclonal
预测反应	
应用	WB
推荐浓度	WB: 1:500 - 1:1000
理论分子量	60kDa/66kDa
实测分子量	67KDa
形式	Liquid
保存条件	Store at -20°C. Avoid freeze / thaw cycles. Buffer: PBS with 0.01% thiomersal,50% glycerol,pH7.3.
偶联物	Unconjugated
阳性对照	HepG2,A-549,Rat heart
细胞定位	Cytoplasm,Nucleus
纯化	Affinity purification

抗原信息

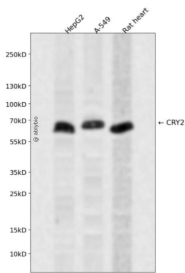
抗原信息	Recombinant fusion protein containing a sequence corresponding to amino acids 1-230 of human CRY2 (NP_066940.3).
序列	MAATVATAAAVAPAPAGTDSASSVHWFRKGLRLHDNPALLAAVARGARCVRVCVYILDPWFAASSVGINRWRFLLSLE DLDTSLRKLNSRLFVVRGQPADVFPRLFKEWGVTRLTFEYDSEPFGERDAAIMKMAKEAGVEVVTENSHTLYDLDRIIEL NGQKPPLTYKRFQAIISRMELPKKPVGLVTSQQMESCRAEIQENHDETYGVPSLEELGFPTEGLGPAVWQ

靶点信息

研究背景	This gene encodes a flavin adenine dinucleotide-binding protein that is a key component of the circadian core oscillator complex, which regulates the circadian clock. This gene is upregulated by CLOCK/ARNTL heterodimers but then represses this upregulation in a feedback loop using PER/CRY heterodimers to interact with CLOCK/ARNTL. Polymorphisms in this gene have been associated with altered sleep patterns. The encoded protein is widely conserved across plants and animals. Two transcript variants encoding different isoforms have been found for this gene.
------	---

基因ID	1408
基因名	CRY2
Swiss	Q49AN0
别名	CRY2;HCRY2;PHLL2

产品验证



Western blot analysis of CRY2 expressed in HepG2,A-549,Rat heart using CRY2 Rabbit pAb at 1:1000. Secondary antibody: HRP Goat Anti-Rabbit IgG (H+L) at 1:5000. Lysates/proteins: 30ug per lane. Blocking buffer: 5% non-fat dry milk in TBST. Detection: ECL Enhanced Kit. Exposure time: 120s.

实验步骤

访问官网浏览详情: www.ablybio.cn