

# GIF Rabbit pAb

货号: **AYP16555**

## 产品信息

反应	Human,Mouse
宿主	Rabbit
克隆性	Polyclonal
预测反应	
应用	WB IF/ICC
推荐浓度	<b>WB:</b> 1:500 - 1:2000 <b>IF/ICC:</b> 1:50 - 1:100
理论分子量	42kDa/45kDa
实测分子量	45kDa
形式	Liquid
保存条件	Store at -20°C. Avoid freeze / thaw cycles. Buffer: PBS with 0.02% sodium azide,50% glycerol,pH7.3.
偶联物	Unconjugated
阳性对照	Mouse pancreas,Mouse heart
细胞定位	Secreted
纯化	Affinity purification

## 抗原信息

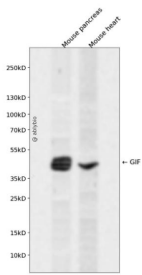
抗原信息	Recombinant fusion protein containing a sequence corresponding to amino acids 20-300 of human GIF (N P_005133.2).
序列	TQTQSSCSVPSAQEPLVNGIQVLMENSVTSSAYPNPSILIAMNLAGAYNLKAQKLLTYQLMSSDNDLTIGQLGLTIMALTS SCRDPGDKVSILQRQMENWAPSSPNAEASAFYGPLAILALCQKNSEATLPIAVRFAKTLLANSSPFNVDTGAMATLALTC MYNKIPVGSEEGYRSLFGQVLKDIVKISMKIKDNGIIGDIYSTGLAMQALSVTPEPSKKEWNCKKTTDMILNEIKQGKFHNP MSIAQILPSLKGKTYLDVPQVTCSPDHEVQPTLPS

## 靶点信息

研究背景	This gene is a member of the cobalamin transport protein family. It encodes a glycoprotein secreted by parietal cells of the gastric mucosa and is required for adequate absorption of vitamin B12. Vitamin B12 is necessary for erythrocyte maturation and mutations in this gene may lead to congenital pernicious anemia.
------	--

基因ID	2694
基因名	GIF
Swiss	P27352
别名	GIF;IF;IFMH;INF;TCN3

## 产品验证



Western blot analysis of GIF expressed in Mouse pancreas, Mouse heart using GIF Rabbit pAb at 1:1000. Secondary antibody: HRP Goat Anti-Rabbit IgG (H+L) at 1:5000. Lysates/proteins: 30ug per lane. Blocking buffer: 5% non-fat dry milk in TBST. Detection: ECL Enhanced Kit. Exposure time: 120s.

## 实验步骤

访问官网浏览详情: [www.ablybio.cn](http://www.ablybio.cn)