

# HLA-DMA Rabbit pAb

货号: **AYP16553**

## 产品信息

反应	Human,Mouse
宿主	Rabbit
克隆性	Polyclonal
预测反应	
应用	WB
推荐浓度	<b>WB:</b> 1:500 - 1:2000
理论分子量	29kDa
实测分子量	35kDa
形式	Liquid
保存条件	Store at -20°C. Avoid freeze / thaw cycles. Buffer: PBS with 0.02% sodium azide,50% glycerol,pH7.3.
偶联物	Unconjugated
阳性对照	A-431,Jurkat,HeLa,Mouse lung
细胞定位	Late endosome membrane,Lysosome membrane,Single-pass type I membrane protein
纯化	Affinity purification

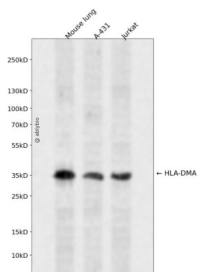
## 抗原信息

抗原信息	Recombinant fusion protein containing a sequence corresponding to amino acids 27-233 of human HLA-DMA (NP_006111.2).
序列	VPEAPTPMWPDDLQNHTFLHTVYQC DGSPSVGLSEAYDEDQLFFDFSQNTRVPR LPEFADWAQEQGDAPAILFDKEFC EWMIQQIGPKLDGKIPVSRGFPIAEVFTLKP LEFGKPN TLVCFVSNLFP PMLTVNWQHHSVPVEGFGPTFVSAVDGLSFQA FSYLNFTPEPSDIFSCIVTHEIDRYTAIAYWVPRNALPSD LLENVLC

## 靶点信息

研究背景	HLA-DMA belongs to the HLA class II alpha chain paralogues. This class II molecule is a heterodimer consisting of an alpha (DMA) and a beta chain (DMB), both anchored in the membrane. It is located in intracellular vesicles. DM plays a central role in the peptide loading of MHC class II molecules by helping to release the CLIP molecule from the peptide binding site. Class II molecules are expressed in antigen presenting cells (APC: B lymphocytes, dendritic cells, macrophages). The alpha chain is approximately 33-35 kDa and its gene contains 5 exons. Exon one encodes the leader peptide, exons 2 and 3 encode the two extracellular domains, exon 4 encodes the transmembrane domain and the cytoplasmic tail.
基因ID	3108
基因名	
Swiss	P28067
别名	HLA-DMA;D6S222E;DMA;HLADM;RING6;major histocompatibility complex;class II;DM alpha

## 产品验证



Western blot analysis of HLA-DMA expressed in Mouse lung, A-431, Jurkat using HLA-DMA Rabbit pAb at 1:1000. Secondary antibody: HRP Goat Anti-Rabbit IgG (H+L) at 1:5000. Lysates/proteins: 30ug per lane. Blocking buffer: 5% non-fat dry milk in TBST. Detection: ECL Enhanced Kit. Exposure time: 120s.

## 实验步骤

访问官网浏览详情: [www.ablybio.cn](http://www.ablybio.cn)