

GPS1 Rabbit pAb

货号: **AYP16549**

产品信息

反应	Human,Mouse,Rat
宿主	Rabbit
克隆性	Polyclonal
预测反应	
应用	WB IHC IF/ICC
推荐浓度	WB: 1:500 - 1:2000 IHC: 1:50 - 1:200 IF/ICC: 1:50 - 1:200
理论分子量	55kDa/59kDa
实测分子量	55kDa
形式	Liquid
保存条件	Store at -20°C. Avoid freeze / thaw cycles. Buffer: PBS with 0.02% sodium azide,50% glycerol,pH7.3.
偶联物	Unconjugated
阳性对照	293T,SKOV3,Mouse brain
细胞定位	Cytoplasm,Nucleus
纯化	Affinity purification

抗原信息

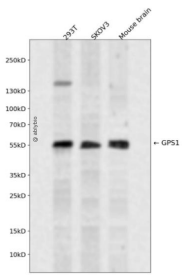
抗原信息	Recombinant fusion protein containing a sequence corresponding to amino acids 258-527 of human GPS1 (NP_997657.1).
序列	VSKAESTPEIAEQRGERDSQTQAILTKLCAAGLAELAARKYKQAAKCLLLASFDHCDPELLSPSNVAIYGGLCALATFDR QELQRNVISSSFKLFLELEPQVRDIIFKFYESKYASCLKMLDEMKNLLLDMYLAPHVRTLYTQIRNRALIQYFSPYVSADM HRMAAAFNTTVAALEDELTLILEGLISARVDSHSKILYARDVDQRSTTFEKSLLMGKEFQRRAKAMMLRAAVLRNQIHVK SPPREGSQGELTPANSQSRMSTNM

靶点信息

研究背景	This gene is known to suppress G-protein and mitogen-activated signal transduction in mammalian cells. The encoded protein shares significant similarity with Arabidopsis FUS6, which is a regulator of light-mediated signal transduction in plant cells.
------	--

基因ID	2873
基因名	GPS1
Swiss	Q13098
别名	GPS1;COPS1;CSN1;SGN1

产品验证



Western blot analysis of GPS1 expressed in 293T,SKOV3,Mouse brain using GPS1 Rabbit pAb at 1:1000. Secondary antibody: HRP Goat Anti-Rabbit IgG (H+L) at 1:5000. Lysates/proteins: 30ug per lane. Blocking buffer: 5% non-fat dry milk in TBST. Detection: ECL Enhanced Kit. Exposure time: 120s.

实验步骤

访问官网浏览详情: www.ablybio.cn