

MEST Rabbit pAb

货号: AYP16546

产品信息

反应	Human,Mouse
宿主	Rabbit
克隆性	Polyclonal
预测反应	
应用	WB IF/ICC
推荐浓度	WB: 1:1000 - 1:5000 IF/ICC: 1:50 - 1:100
理论分子量	33kDa/37kDa/38kDa
实测分子量	39KDa
形式	Liquid
保存条件	Store at -20°C. Avoid freeze / thaw cycles. Buffer: PBS with 0.02% sodium azide,50% glycerol,pH7.3.
偶联物	Unconjugated
阳性对照	Mouse brain
细胞定位	Endoplasmic reticulum membrane,Multi-pass membrane protein
纯化	Affinity purification

抗原信息

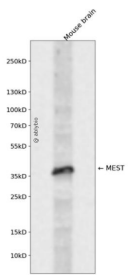
抗原信息	Recombinant fusion protein containing a sequence corresponding to amino acids 146-335 of human MEST (NP_002393.2).
序列	HDYGDIVAQELLYRYKQNRSGRLTIKSLCLSNNGGIFPETHRPLLLQKLLKDGGVLSPILTRLMNFFVFSRGLTPVFGPYTRPSESELWDMWAGIRNNDGNLVIDSLLQYINQRKKFRRRWVWALASVTIPIHFYIGPLDPVNPYPFLELYRKTLPSTVSILDDHISHYPQLEDPMGFLNAYMGFINSF

靶点信息

研究背景	This gene encodes a member of the alpha/beta hydrolase superfamily. It is imprinted, exhibiting preferential expression from the paternal allele in fetal tissues, and isoform-specific imprinting in lymphocytes. The loss of imprinting of this gene has been linked to certain types of cancer and may be due to promoter switching. The encoded protein may play a role in development. Alternatively spliced transcript variants encoding multiple isoforms have been identified for this gene. Pseudogenes of this gene are located on the short arm of chromosomes 3 and 4, and the long arm of chromosomes 6 and 15.
------	--

基因ID	4232
基因名	MEST
Swiss	Q5EB52
别名	MEST;PEG1

产品验证



Western blot analysis of MEST expressed in Mouse brain using MEST Rabbit pAb at 1:1000. Secondary anti body: HRP Goat Anti-Rabbit IgG (H+L) at 1:5000. Lysates/proteins: 30ug per lane. Blocking buffer: 5% no n-fat dry milk in TBST. Detection: ECL Enhanced Kit. Exposure time: 120s.

实验步骤

访问官网浏览详情: www.ablybio.cn