

# NASP Rabbit pAb

货号: **AYP16544**

## 产品信息

反应	Human,Mouse,Rat
宿主	Rabbit
克隆性	Polyclonal
预测反应	
应用	WB IHC IF/ICC
推荐浓度	<b>WB:</b> 1:500 - 1:2000 <b>IHC:</b> 1:50 - 1:200 <b>IF/ICC:</b> 1:50 - 1:200
理论分子量	48kDa/78kDa/85kDa/86kDa
实测分子量	85kDa
形式	Liquid
保存条件	Store at -20°C. Avoid freeze / thaw cycles. Buffer: PBS with 0.02% sodium azide,50% glycerol,pH7.3.
偶联物	Unconjugated
阳性对照	SW620,HL-60,293T
细胞定位	Cytoplasm,Nucleus
纯化	Affinity purification

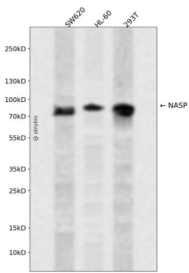
## 抗原信息

抗原信息	Recombinant fusion protein containing a sequence corresponding to amino acids 180-449 of human NASP (NP_689511.2).
序列	WDMLDLAKIIFKRQETKEAQLYAAQAHLKLGESVSEENYVQAVEEFQSCNLNQEYLAHDRLLAETHYQLGLAYGYNSQYDEAVAQFSKSIEVIENRMAVLNEQVKEAEGSSAEYKKEIEELKELLPEIREKIEDAKESQRSGNVAELALKATLVESSTSGFTPGGGGSSVSMIARKPTDGASSSNCVTDISHLVRKKRKPEEESPRKDDAKKAKQEPEVNGGSGDAVPSGNEVSENMEEEAENQAESRAAVEGTVEAGATVESTAC

## 靶点信息

研究背景	This gene encodes a H1 histone binding protein that is involved in transporting histones into the nucleus of dividing cells. Multiple isoforms are encoded by transcript variants of this gene. The somatic form is expressed in all mitotic cells, is localized to the nucleus, and is coupled to the cell cycle. The testicular form is expressed in embryonic tissues, tumor cells, and the testis. In male germ cells, this protein is localized to the cytoplasm of primary spermatocytes, the nucleus of spermatids, and the periacrosomal region of mature spermatozoa.
基因ID	4678
基因名	NASP
Swiss	P49321
别名	NASP;FLB7527;HMDRA1;PRO1999

## 产品验证



Western blot analysis of NASP expressed in SW620,HL-60,293T using NASP Rabbit pAb at 1:1000. Secondary antibody: HRP Goat Anti-Rabbit IgG (H+L) at 1:5000. Lysates/proteins: 30ug per lane. Blocking buffer: 5% non-fat dry milk in TBST. Detection: ECL Enhanced Kit. Exposure time: 120s.

## 实验步骤

访问官网浏览详情: [www.ablybio.cn](http://www.ablybio.cn)