

# PDE6B Rabbit pAb

货号: **AYP16541**

## 产品信息

反应	Human,Mouse,Rat
宿主	Rabbit
克隆性	Polyclonal
预测反应	
应用	WB IHC IF/ICC
推荐浓度	<b>WB:</b> 1:500 - 1:2000 <b>IHC:</b> 1:50 - 1:100 <b>IF/ICC:</b> 1:50 - 1:100
理论分子量	66kDa/98kDa
实测分子量	98kDa
形式	Liquid
保存条件	Store at -20°C. Avoid freeze / thaw cycles. Buffer: PBS with 0.02% sodium azide,50% glycerol,pH7.3.
偶联物	Unconjugated
阳性对照	Mouse liver,Mouse pancreas,Mouse heart,Rat liver
细胞定位	Lipid-anchor,Membrane
纯化	Affinity purification

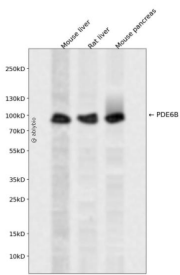
## 抗原信息

抗原信息	Recombinant fusion protein containing a sequence corresponding to amino acids 1-190 of human PDE6B (NP_001138763.1).
序列	MSLSEEQARSFLDQNPDFARQYFGKKLSPENVAACEDGCPPDCDSLRLDLCQVEESTALLELVQDMQESINMERSVFKV LRRLLCTLLQADRCSLFMQRNGVAELATRLFSVQPDSVLEDCLVPPDSEIVFPLDIGVVGHVVAQTKKMNVNEDVAECPHF SSFADELTDYKTKNMLATPIMNGKDVVAVI

## 靶点信息

研究背景	Photon absorption triggers a signaling cascade in rod photoreceptors that activates cGMP phosphodiesterase (PDE), resulting in the rapid hydrolysis of cGMP, closure of cGMP-gated cation channels, and hyperpolarization of the cell. PDE is a peripheral membrane heterotrimeric enzyme made up of alpha, beta, and gamma subunits. This gene encodes the beta subunit. Mutations in this gene result in retinitis pigmentosa and autosomal dominant congenital stationary night blindness. Multiple transcript variants encoding different isoforms have been found for this gene.
基因ID	5158
基因名	PDE6B
Swiss	P35913
别名	PDE6B;CSNB3;CSNBAD2;PDEB;RP40;rd1;GMP-PDEbeta

## 产品验证



Western blot analysis of PDE6B expressed in Mouse liver, Rat liver, Mouse pancreas using PDE6B Rabbit pAb at 1:1000. Secondary antibody: HRP Goat Anti-Rabbit IgG (H+L) at 1:5000. Lysates/proteins: 30ug per lane. Blocking buffer: 5% non-fat dry milk in TBST. Detection: ECL Enhanced Kit. Exposure time: 120 S.

## 实验步骤

访问官网浏览详情: [www.ablybio.cn](http://www.ablybio.cn)