

PSMD8 Rabbit pAb

货号: **AYP16537**

产品信息

反应	Human,Mouse,Rat
宿主	Rabbit
克隆性	Polyclonal
预测反应	
应用	WB IF/ICC
推荐浓度	WB: 1:500 - 1:2000 IF/ICC: 1:50 - 1:200
理论分子量	39kDa
实测分子量	30-35kDa
形式	Liquid
保存条件	Store at -20°C. Avoid freeze / thaw cycles. Buffer: PBS with 0.02% sodium azide,50% glycerol,pH7.3.
偶联物	Unconjugated
阳性对照	SGC-7901,Jurkat,SW480,U-87MG,Mouse testis,Mouse skeletal muscle,Mouse thymus
细胞定位	cytosol,nucleoplasm,nucleus
纯化	Affinity purification

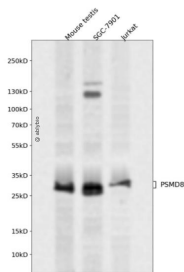
抗原信息

抗原信息	Recombinant fusion protein containing a sequence corresponding to amino acids 101-350 of human PSM D8 (NP_002803.2).
序列	EWNRKSPNLSKCGEELGRLKLVLELNLFLPTTGTKLTKQQLILARDILEIGAQWSILRKDIPSFERYMAQLKCYFDYKEQLPE SAYMHQLLGLNLLFLLSQNRVAEFHTELERLPAKDIQTNVYIKHPVSLEQYLMEGSYNKVFLAKGNIPAESYFFFIDILLDTIR DEIAGCIEKAYEKILFTEATRILFFNTPKMTDYAKKRGWVLGPNNYYSFASQQQKPEDTTIPSTELAKQVIEYARQLEMIV

靶点信息

研究背景	The 26S proteasome is a multicatalytic proteinase complex with a highly ordered structure composed of 2 complexes, a 20S core and a 19S regulator. The 20S core is composed of 4 rings of 28 non-identical sub units; 2 rings are composed of 7 alpha subunits and 2 rings are composed of 7 beta subunits. The 19S regulator is composed of a base, which contains 6 ATPase subunits and 2 non-ATPase subunits, and a lid, which contains up to 10 non-ATPase subunits. Proteasomes are distributed throughout eukaryotic cells at a high concentration and cleave peptides in an ATP/ubiquitin-dependent process in a non-lysosomal pathway. An essential function of a modified proteasome, the immunoproteasome, is the processing of class I MHC peptides. This gene encodes a non-ATPase subunit of the 19S regulator. A pseudogene has been identified on chromosome 1.
基因ID	5714
基因名	PSMD8
Swiss	P48556
别名	PSMD8;HEL-S-91n;HIP6;HYPF;Nin1p;Rpn12;S14;p31

产品验证



Western blot analysis of PSMD8 expressed in Mouse testis,SGC-7901,Jurkat using PSMD8 Rabbit pAb at 1:1000. Secondary antibody: HRP Goat Anti-Rabbit IgG (H+L) at 1:5000. Lysates/proteins: 30ug per lane. Blocking buffer: 5% non-fat dry milk in TBST. Detection: ECL Enhanced Kit. Exposure time: 120s.

实验步骤

访问官网浏览详情: www.ablybio.cn