

RASGRF1 Rabbit pAb

货号: **AYP16534**

产品信息

反应	Mouse
宿主	Rabbit
克隆性	Polyclonal
预测反应	
应用	WB
推荐浓度	WB: 1:500 - 1:2000
理论分子量	55kDa/143kDa/145kDa
实测分子量	145kDa
形式	Liquid
保存条件	Store at -20°C. Avoid freeze / thaw cycles. Buffer: PBS with 0.02% sodium azide,50% glycerol,pH7.3.
偶联物	Unconjugated
阳性对照	Mouse brain
细胞定位	cytosol,growth cone,neuron projection,plasma membrane
纯化	Affinity purification

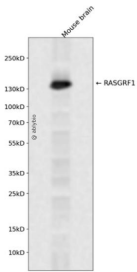
抗原信息

抗原信息	Recombinant fusion protein containing a sequence corresponding to amino acids 1-190 of human RASGRF1 (NP_001139120.1).
序列	MQKGIRLNDGHVASLGLLARKDGTGRKGYLSKRSSDNTKWQTKWFALLQNLIFYFESDSSSRPSGLYLLEGCVCDRAPSP KPALSAKEPLEKQHYFTVNFSHENQKALELRTEDAKDCDEWVAIAHASYRTLATEHEALMQKYLHLLQIVETEKTVAKQLR QQIEDGEIEIERLKAETSLLKDNERIQS

靶点信息

研究背景	The protein encoded by this gene is a guanine nucleotide exchange factor (GEF) similar to the <i>Saccharomyces cerevisiae</i> CDC25 gene product. Functional analysis has demonstrated that this protein stimulates the dissociation of GDP from RAS protein. The studies of the similar gene in mouse suggested that the Ras-GEF activity of this protein in brain can be activated by Ca ²⁺ influx, muscarinic receptors, and G protein beta-gamma subunit. Mouse studies also indicated that the Ras-GEF signaling pathway mediated by this protein may be important for long-term memory. Alternatively spliced transcript variants encoding distinct isoforms have been reported.
基因ID	5923
基因名	RASGRF1
Swiss	Q13972
别名	RASGRF1;CDC25;CDC25L;GNRP;GRF1;GRF55;H-GRF55;PP13187;ras-GRF1

产品验证



Western blot analysis of RASGRF1 expressed in Mouse brain using RASGRF1 Rabbit pAb at 1:1000. Secondary antibody: HRP Goat Anti-Rabbit IgG (H+L) at 1:5000. Lysates/proteins: 30ug per lane. Blocking buffer: 5% non-fat dry milk in TBST. Detection: ECL Enhanced Kit. Exposure time: 120s.

实验步骤

访问官网浏览详情: www.ablybio.cn